

# **net**sys

*Networking your world*

***National Enhance Technology  
VDSL2/G.fast Solutions***



*Simply Delivering net connection...*

## *What is VDSL2 ?*



### **VDSL2**

(Very-High-Bit-Rate Digital Subscriber Line 2), G.993.2, is standard of the most generally utilized xDSL broadband wire-line communications technology.

Designed to support the wide deployment of Triple Play services such as voice, video, data, high definition television (HDTV) and interactive gaming, VDSL2 enables operators and carriers to gradually, flexibly, and cost efficiently upgrade existing xDSL-infrastructure.

# *What is G.fast ?*



## **G.fast**

G.fast is digital subscriber line protocol standard which approved and published by ITU as G.9700/G.9701, it is the latest and most advanced xDSL broadband technology.

Designed with much higher bandwidth for coordination with the existing FTTx network, G.fast provide operators and carriers flexible and cost efficiently solution which is not only enable upgrade for current xDSL network but also a new choice for Fiber-copper hybrid infrastructure.

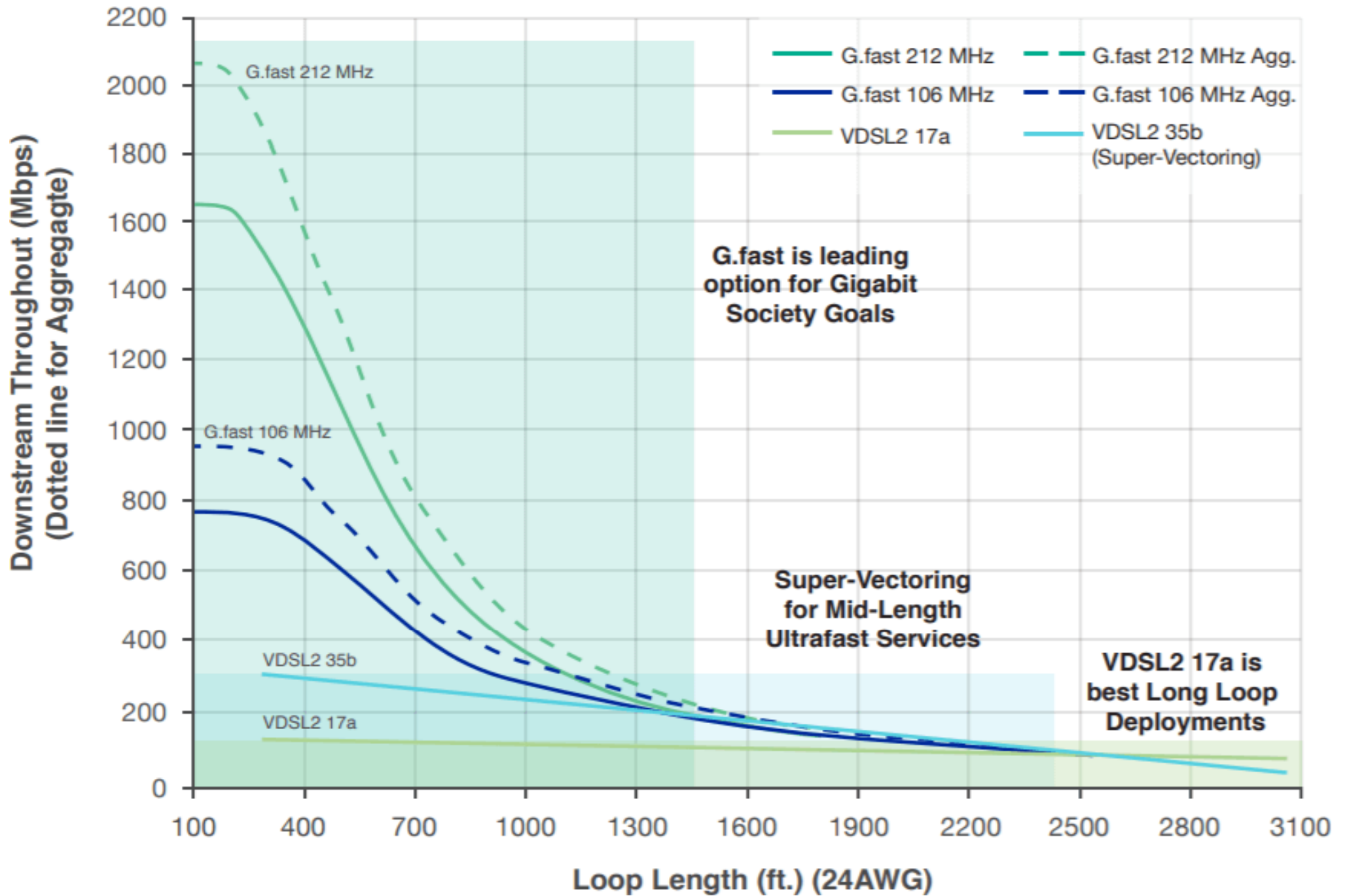


Table 1. G.fast theoretically speed rate.



## ***Why we need VDSL2/G.fast ?***

- xDSL infrastructure are still physically the most flexible access technologies between CO (Central Office) and subscriber.
- With dynamically increasing requirement for multi-media network, xDSL provide a well developed intermediate solution for Triple Play services, which operators and carriers can easily connect subscriber for their mobile, WiFi and multi-media service.
- VDSL2 provide long distance connection which allow operators and carriers extend their network coverage and provide internet service for subscriber at rural area, with adequate speed-rate.
- G.fast enable Gigabit speeds over existing infrastructure which can not only used for legacy equipment upgrade. Combine with Fiber-to-the-Building/distribution point (FTTB/FTTdp), this high utilizable solution offer high bandwidth that future technologies development would need and lower the subscriber connection costs.

# ***VDSL2/G.fast Products Application Environment***

- Retail POS (Department stores, Bars, Restaurants, Parking spaces, Retail spaces)
- Government (Naval ships, Housing, National Parks, Forestry, Research stations, Utilities, etc)
- Education (Outdoor camps, College campuses)
- Healthcare (Hospitals, Elder care, Outpatient facilities)
- Entertainment (Movie theaters, Home entertainment, Fairs , Outdoor venues)

***Building***



***Campus***



***Hospital***

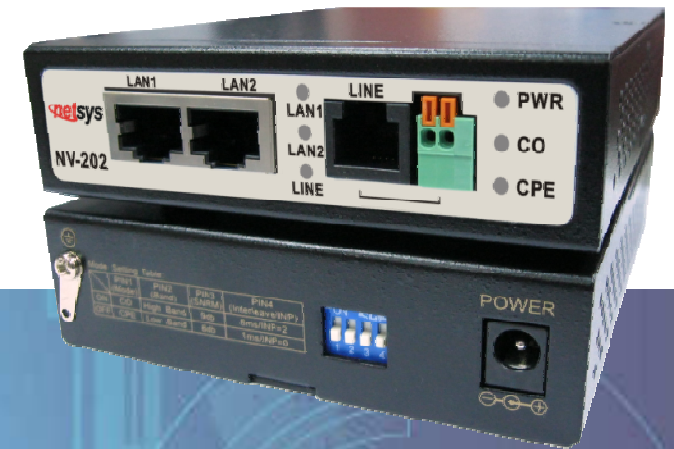


# ***VDSL2/G.fast business grade series***

- **NV-202 :**  
VDSL2 LAN extender with DIP Switch and 2 fast Ethernet
- **NV-202P :**  
VDSL2 LAN extender with 2 x Fast Ethernet plus 25W POE
- **NV-202M/S :**  
VDSL2 LAN extender with remote power + POE
- **NV-600A :**  
ADSL2+/VDSL2 Modem Router with 4 Giga Ethernet
- **NV-720 :**  
Managed VDSL2 CPE Router with 11n/11ac Wi-Fi
- **NV-700L :**  
VDSL2 Single Master Modem
- **NV-802S :**  
8 Ports VDSL2 Managed IP DSLAM with 2 x Giga SFP Fiber & RJ45 Ethernet Combo
- **NV-450M/S :**  
Managed Single Master/Slave G.fast/VDSL2/V35B Bridge/Router Modem

# NV-202

## VDSL2 LAN extender with DIP Switch



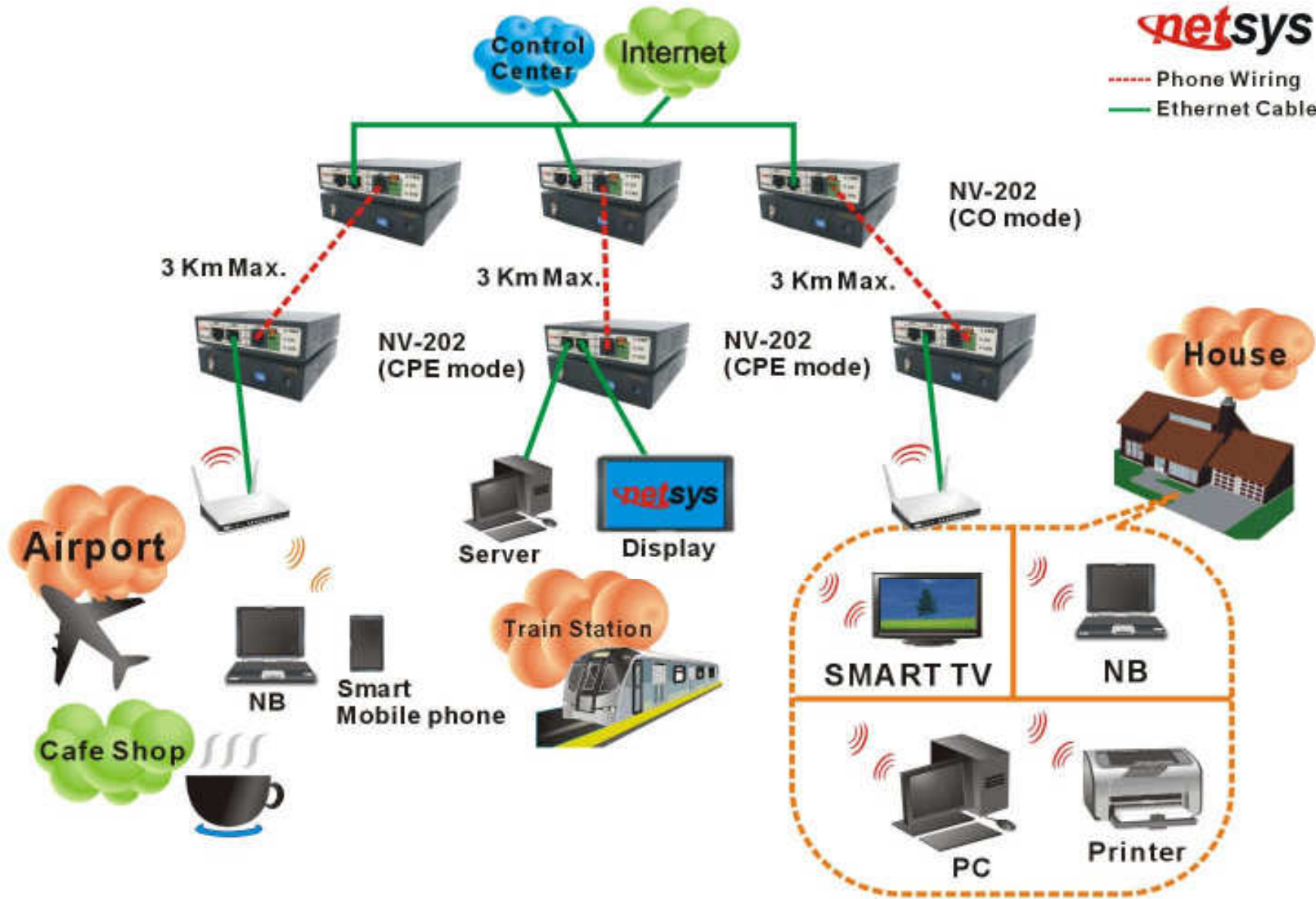
### *Benefits & Features:*

- Supports RJ-11/Terminal Block combo for Line port.
- Supports high bandwidth up to 100Mbps symmetric over Line ports.
- Supports long reach mode up to 3 km with 24 gauge phone wire.
- Supports auto speed for Line port and Interleave mode selectable through CO side DIP switch.
- DIP switch with CO and CPE mode selectable.
- Supports interleave / INP & noise margin config by DIP Switch.
- Supports Surge protection.
- Compact size and metal case and Din-Rail (Optional) design.
- Supports point-to-point applications.



# NV-202 Application Diagram

## VDSL2 APPLICATION DIAGRAM



# NV-202P

## Long Reach LAN Extender with PoE



### Benefits & Features:

- Provides 2 x 10/100 Mbps RJ-45 Ethernet ports with power injector.
- Supports Auto speed RJ-11/Terminal Block combo for Line port.
- Supports high bandwidth up to 100Mbps symmetric over Line ports.
- Supports long reach mode up to 3km with twisted pair phone wire.
- DIP switch with CO and CPE mode selectable.
- Supports high band / interleave / INP & noise margin config by DIP Switch.
- Supports Surge protection for line port.
- Auto-detect of PoE IEEE 802.3af/at (up to 25W) equipment providing protection from incorrect installation.
- Supports wall mounting and DIN-Rail mount installation (Optional).
- Supports mid-span PoE mode.
- Supports point-to-point applications.

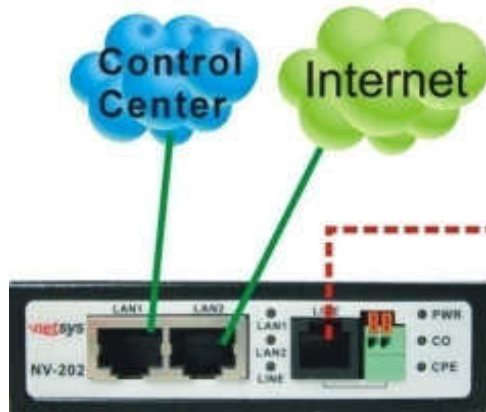
# NV-202P Application Diagram



- Phone Wiring
- Ethernet Cable
- Ethernet Cable with POE
- Power Cable

Support 100 Mbps per port  
symmetrical bandwidth over phone wiring

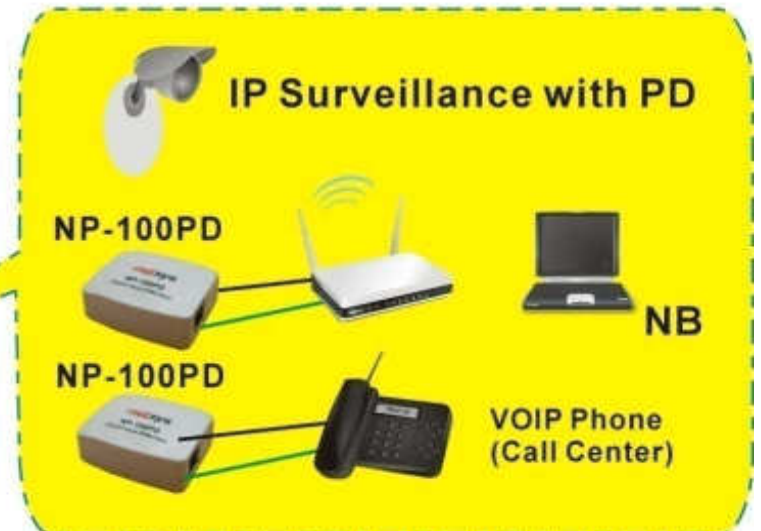
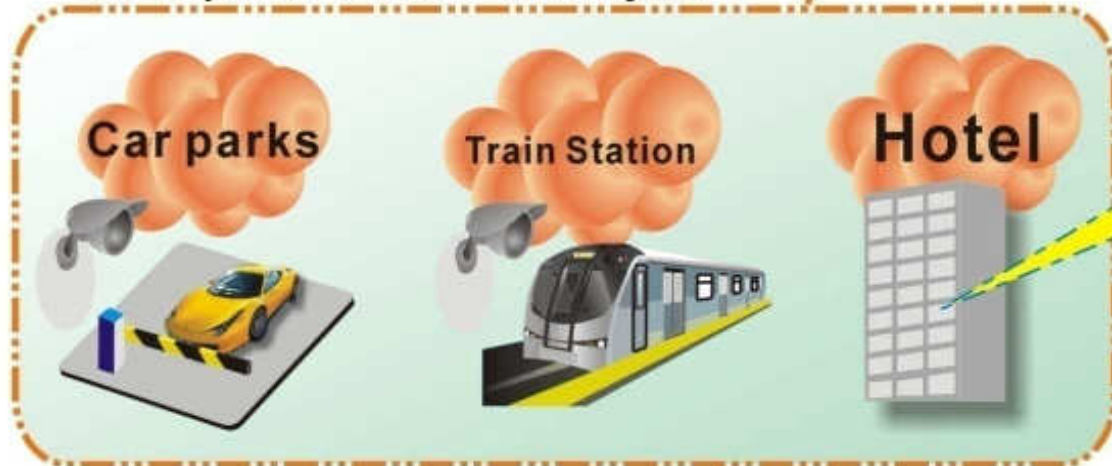
3 Km Max.



NV-202(CO mode)  
(DC 12V power input)

NV-202P(CPE mode)  
(DC 48V power input)

100Mbps Max. With Power Injector



# NV-202M/S

**Long Reach LAN Extender  
with Remote Power + POE**

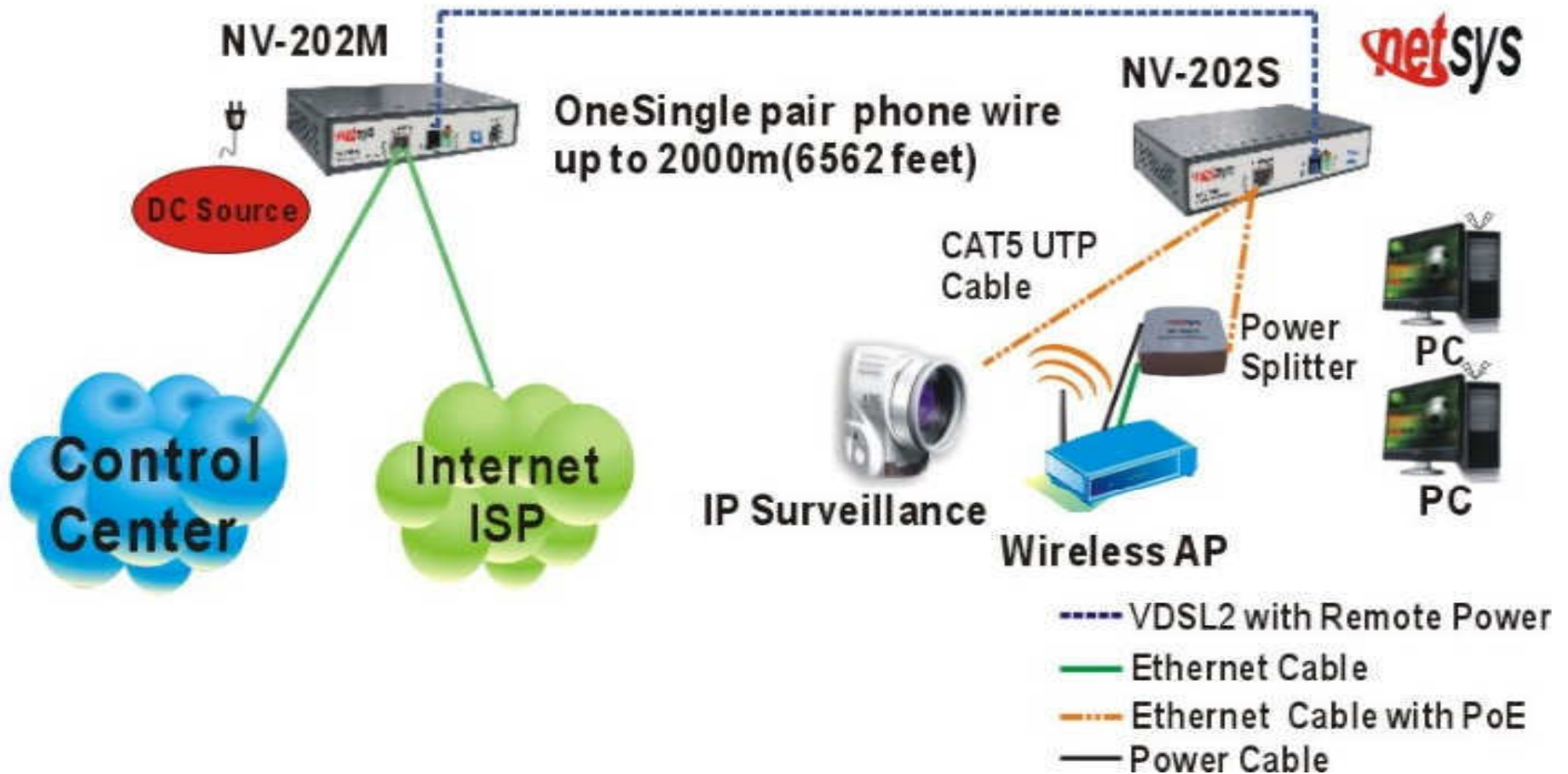


## **Benefits & Features:**

- Compliant with ETSI, ITU and ANSI VDSL2 standards.
- Support Auto speed RJ-11/Terminal Block combo for Line port.
- Support high bandwidth up to 100Mbps symmetric over Line ports.
- Support Power feeding up to 2 km / 7W output budget with single pair twist phone wire.
- Support OVP / OCP / OTP power protection and revise polarity auto cross over.
- Support high band / Interleave mode selectable through CO side DIP switch.
- Support interleave / INP & noise margin config by DIP Switch.
- Support Surge protection for line port.
- Auto-detect of PoE IEEE 802.3af/at equipment providing protection from incorrect installation.
- Support wall mounting and DIN-Rail mount installation (Optional).
- Support mid-span power injector.
- Support point-to-point applications.

# NV-202M/S Application

## VDSL2 with Remote Power Application



# NV-600A

## ADSL2+/VDSL2 Modem Router



### *Benefits & Features:*

- Compliant with IEEE 802.3/802.3u, ETSI, ITU, ANSI VDSL standards.
- POTS / ISDN Splitter port 1 x RJ-11 (Splitter on board).
- POTS / ISDN pass filter Spectrum: 0 ~ 120KHz.
- Supports 997,998 band plan.
- Supports 8a, 8b, 8c, 8d, 12a, 12b, 17a, 17b, 30a band profile.
- Supports Bandwidth up to 100 Mbps over RJ-11 ports.
- Supports IPV4/IPV6 and SSL.
- Supports Web Management (HTTP/HTTPS).
- Supports Route & Switch mode, PPPoE/NAT/DHCP/DMZ/uPnP/Firewall.
- Supports SNR indicator for check phone wiring quality.
- Provides surge protection for VDSL2 port.

# NV-720

## ADSL2+ /VDSL2 Wi-Fi Modem Router



### *Benefits & Features:*

- Adopts ARM Cortex A9 dual-core processor.
- Built-in 2T2R(867Mbps) 802.11ac Wi-Fi AP.
- Supports high bandwidth up to 100Mbps symmetric over line ports.
- Supports 8a, 8b, 8c, 8d, 12a, 12b, 17a, 17b, and 30a band profile.
- Supports uPnP/PPPoE/PPPoATM/IPv4/IPv6.
- Supports Firewall functions contains Packet filtering, DMZ, Mac Address based filtering, Parental Control, Application based filtering.
- Supports DHCP Server/DHCP Relay/DHCP Client/DHCPv6 Client/DHCPv6 Server/DNS/DNS Proxy or Relay/DNSv6 Proxy or Relay/NTP Client/HTTP1.1 server.
- Supports Multicast IP table/IGMP v3 Proxy and Snooping.
- Supports SSL/SSH Security.
- Supports QoS, Prioritize voice over data.
- Supports TR-069.
- Supports G.998.4 G.INP.
- Provides surge protection.

# NV-600A/NV-720 Application Diagram

Netsys' NV-600A/NV-720 is a CPE Router leverages the extraordinary bandwidth promise of VDSL2 (max 100Mbps Symmetric) technology

**netsys**

--- Phone Cable  
— Ethernet Cable





# NV-700L

## VDSL2 Single Master Modem



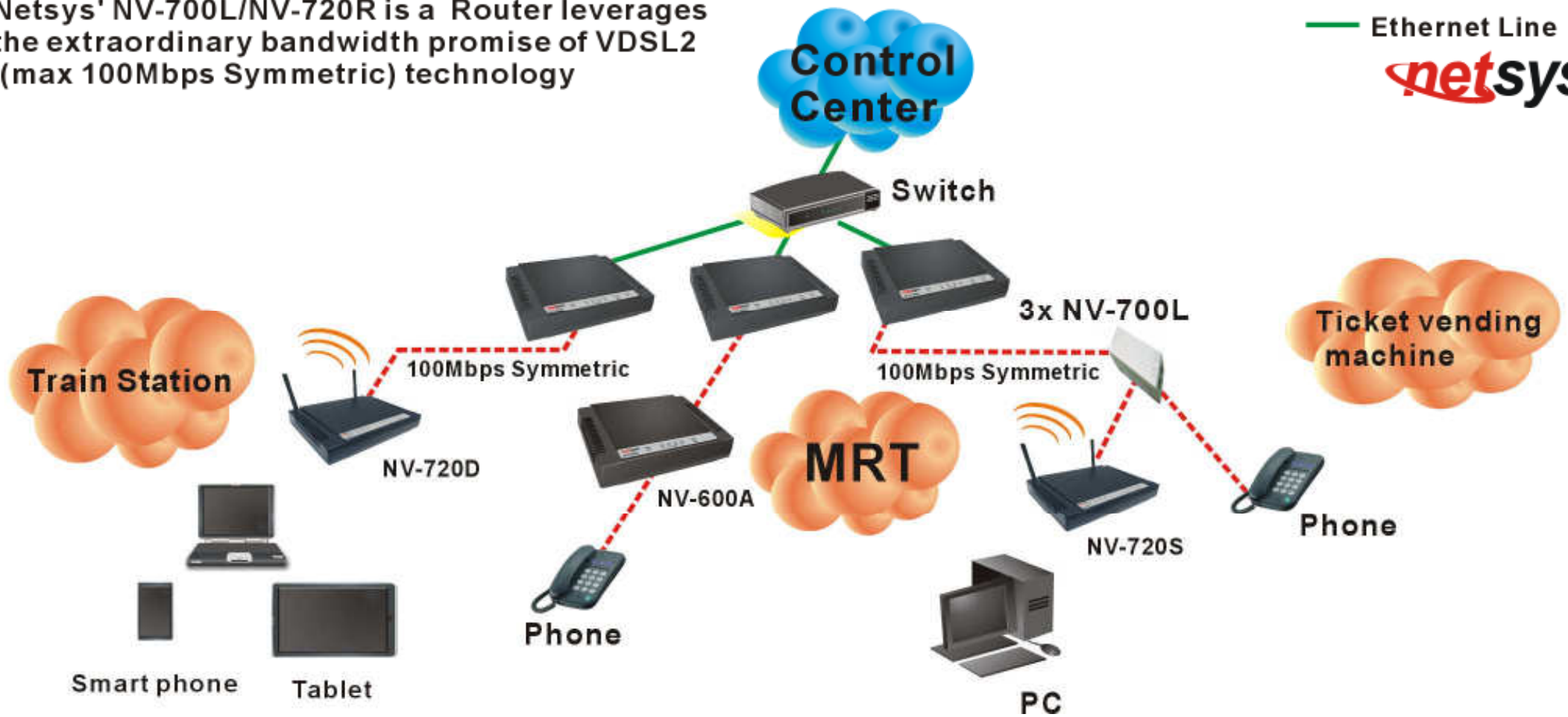
### *Benefits & Features:*

- Adopts ARM Cortex A9 dual-core processor.
- Support http/https web management.
- Support CO side bridge mode.
- Support 8 band selectable.
- Support IPv4/IPv6 address.
- Support 8queue MFC/DSCP both type.
- Supports SSL/SSH Security.
- Supports configuration backup and restore.
- Supports Dual Firmware Image Backup.
- Supports TR-069.
- Supports G.998.4 G.INP.
- Provides surge protection.
- Mac Address based filtering.

# NV-700L Application Diagram

Netsys' NV-700L/NV-720R is a Router leverages the extraordinary bandwidth promise of VDSL2 (max 100Mbps Symmetric) technology

--- Phone Line  
— Ethernet Line  
**netsys**



# NV-802S

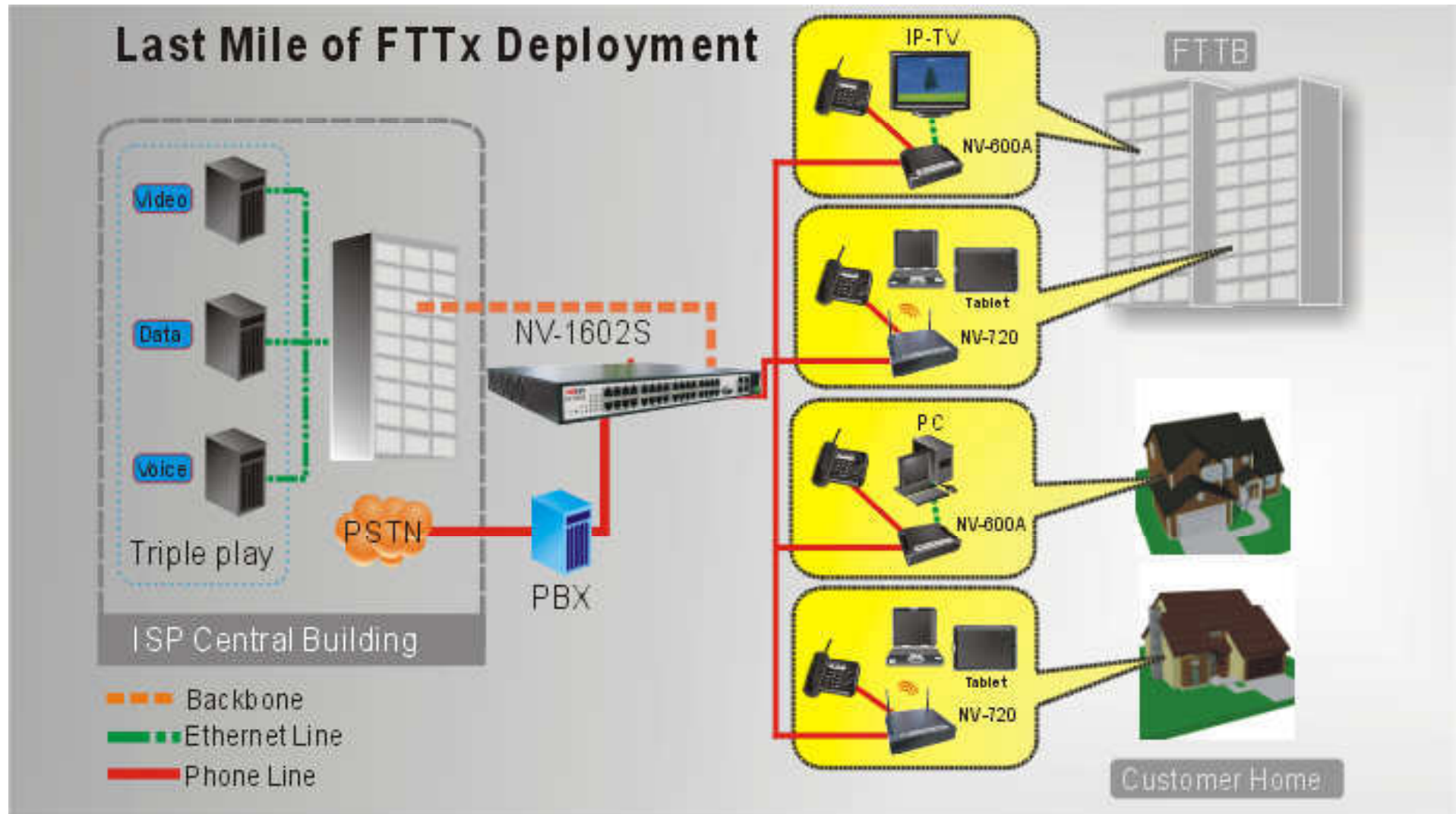
8 Ports VDSL2 Managed IP DSLAM with 2 Giga Ethernet



## Benefits & Features:

- 8 x RJ45 connector for POTS / ISDN connection (Splitter on board)
- 8 x RJ45 connector for VDSL2 connection & 2x Gigabit TP/SFP combo port
- Compliant with IEEE 802.3/802.3u/802.3ab/802.3z Standards
- Compliant with ITU-T G993.2/G993.1/G994.1/G997.1 Standards
- Supports 997,998 band plan
- Supports 997,998 band plan
- Supports 8a, 8b, 8c, 8d, 12a, 12b, 17a, 17b, 30a band profile
- Supports high bandwidth up to 100Mbps within 0.3km for VDSL2 ports
- Supports UPBO, DPBO, Trellis coding and INP.
- Supports Echo cancellation and Virtual Noise
- Supports Web Management (HTTP/HTTPS), TFTP, Console
- Supports interleave delay for noise resistant and data loss
- Supports IEEE802.1q tagging VLAN with Q-in-Q
- Provides surge protection for VDSL2 port
- Supports SNMP v1/v2/v3 and RFC1394 / RFC1643 / RFC1213 MIB
- Supports port security with MAC address filtering
- Supports L2/L3/L4 access control list (ACL)
- Supports DHCP client and Relay & Option 82

# NV-802S Application Diagram



# NV-450M/S

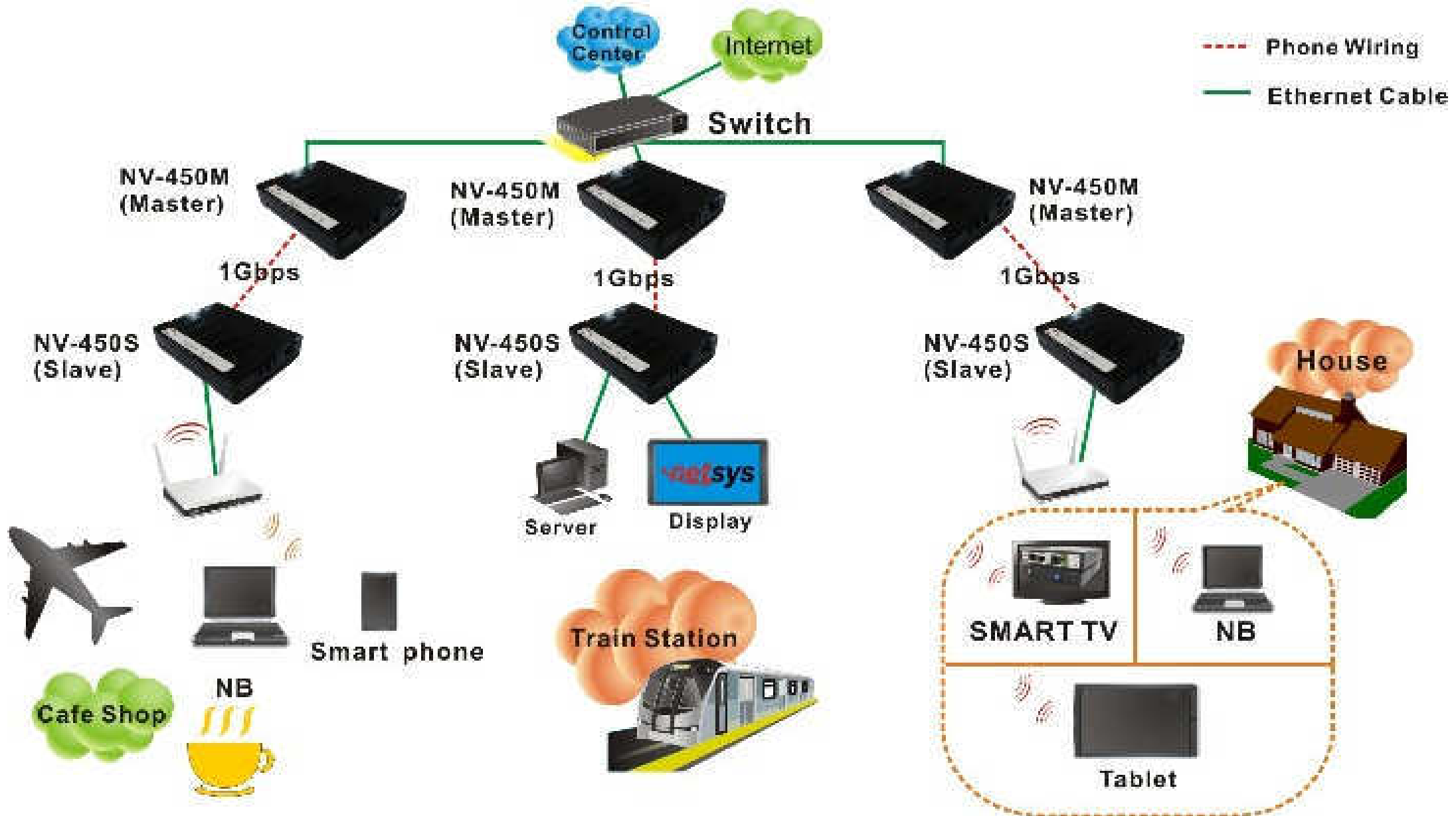
**G.fast Master Modem + G.fast / VDSL2 / V35b Slave Modem**



## **Benefits & Features:**

- Compliant with IEEE 802.3 / 802.3u / 802.3ab Ethernet Standard
- Compliant with ITU-T G993.2 VDSL2 standard (NV-450S only)
- Compliant with ITU-T G998.4 G.INP standard (NV-450S only)
- Compliant with ITU-T G.9700/G.9701 G.fast standard
- Backward compatible VDSL2/V35b (NV-450S only)
- Support 106a/b & 210a/b dual G.fast band profile
- Support super Vectoring for V35b / G.fast(NV-450S only)
- Support Vectoring for VDSL2(NV-450S only)
- Support High Bandwidth up to 1Gbps
- Support USB 3.0 for connecting USB Dongle
- Support static routing for IPv4 and IPv6 forwarding(NV-450S only)
- Mac Address based filtering • Support 8 queue MFC/DSCP both type QoS
- Support HTTP/HTTPS web management • Support SSL security
- Support remote management and monitor
- Support configuration backup and restore
- On board surge protection for Line port
- Support bridge(switch) / Router mode(NV-450M bridge mode only)
- Support Dual Firmware Image Backup • Support RJ-11 / Terminal block combo line port
- Support NTP Time Server. • Support TR-0693.
- On board POTS/ISDN splitter • Support Jumbo frame(MTU) up to 1600 bytes

# NV-450M/S Application Diagram



# ***Industrial grade VDSL2 series***

## **Industrial grade VDSL2 product:**

Industrial grade equipment possess same features with business grade but have higher environment reliability, which allow operators and carriers further extend their service coverage as equipment can be installed in harsh environment.

And with more WiFi & mobile technologies like 4G LTE, LTE-M, LPWAN, LoRa and NB-IoT etc. getting general in the market, our Industrial VDSL2 equipment provide system integrator or carriers some simple solutions if they need to establish connection between system and system, system and server, or connect their WiFi/mobile access point to their network with a pair of twisted copper wire.

# *Industrial VDSL2 series*

- **NV-500 :**  
Industrial Grade VDSL2 LAN extender with DIP Switch
- **NV-600AI :**  
Industrial Grade ADSL2+/VDSL2 Router
- **NV-700I:**  
Industrial Grade managed CO/CPE VDSL2 extender

-20°C

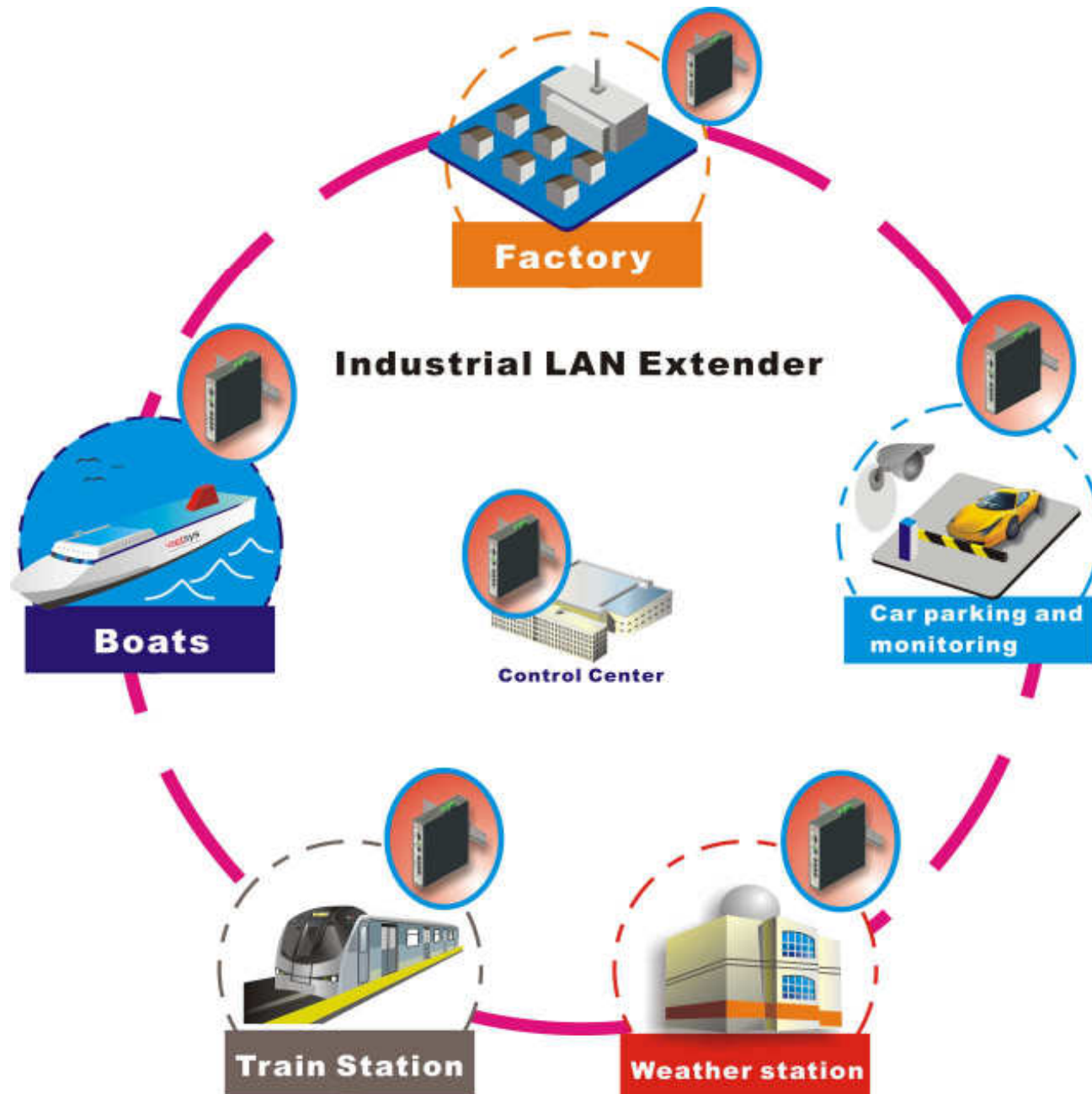
~

70°C





# Industrial-Grade Application



# NV-500

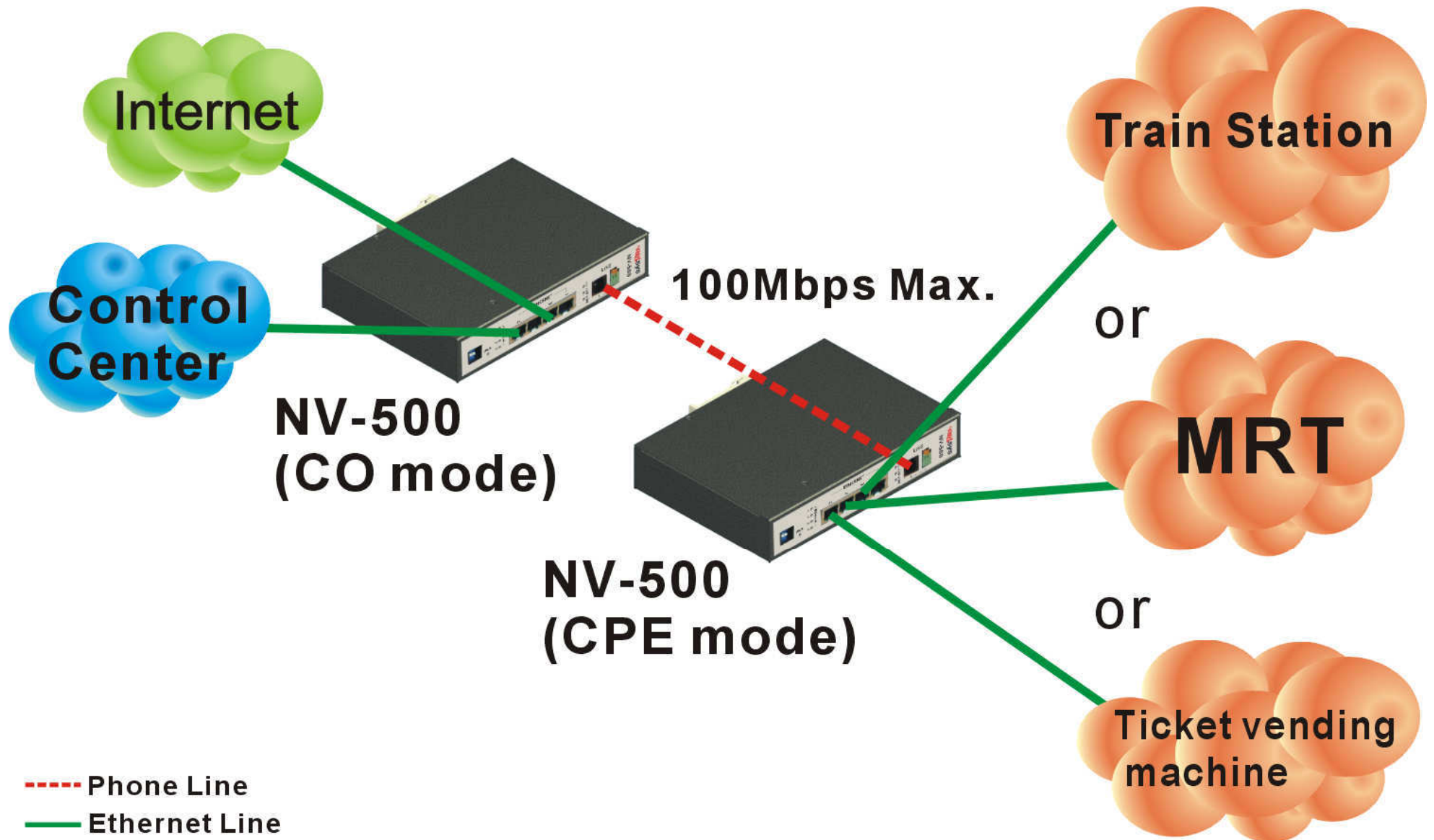
## Industrial Grade VDSL2 LAN extender



### Benefits & Features:

- Supports high bandwidth up to 100Mbps symmetric over Line ports.
- Supports long reach mode up to 3 km with 24 gauge phone wire.
- Supports auto speed for Line port and Interleave mode selectable through CO side DIP switch.
- DIP switch with CO and CPE mode selectable.
- Supports interleave / INP & noise margin config by DIP Switch.
- Supports Surge protection.
- Supports power redundant and wide range dual power input (DC12V ~ 48V).
- Supports Overload Current Protection / Reverse Polarity Protection.
- Supports wide range operating temperature (-20 degree C ~ 70 degree C).
- Supports alarm contact (relay output - 1 A @ 24 VDC).
- Supports DIN-Rail mount installation.
- Metal case design and compliants with IP30 standard.

# NV-500 Application Diagram



# **NV-600AI**

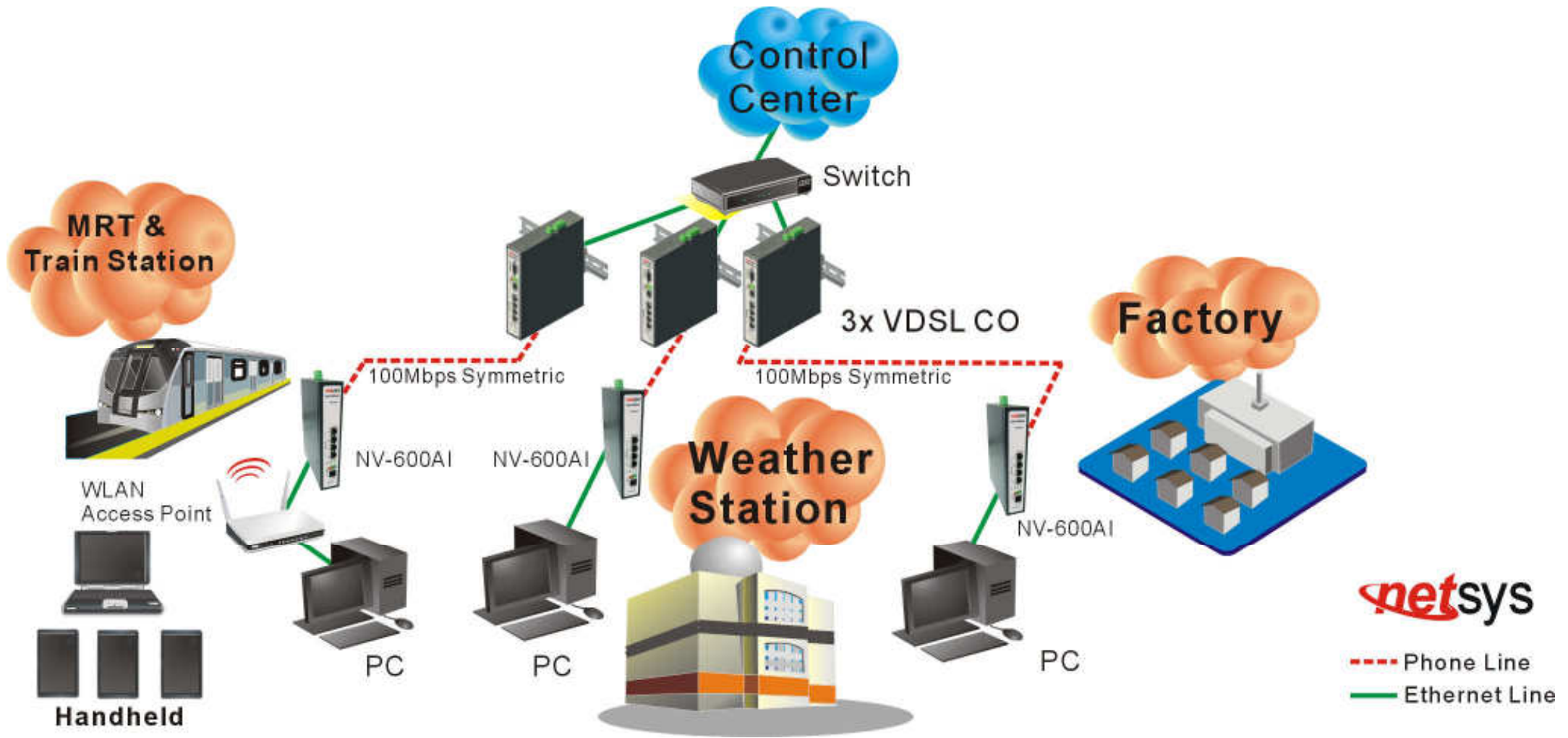
## **Managed Industrial Grade ADSL2+/VDSL2 Router**



### **Benefits & Features:**

- Supports auto speed for Line port.
- Supports high bandwidth up to 100Mbps symmetric over Line ports.
- Supports Web management (HTTP/HTTPS).
- Supports uPnP/PPPoE/NAT/DHCP/DMZ/Firewall.
- Supports Router & Switch (Bridge) mode.
- Supports SNMP v1/v2/v3.
- Supports SNR indicator for checking phone wiring quality.
- Supports Interleave Delay to prevent against noise and data errors.
- Supports 8a, 8b, 8c, 8d, 12a, 12b, 17a, 17b, and 30a band profile.
- Supports 997, 998 band plan.
- Supports Surge protection.
- Supports power redundant and wide range dual power input(DC12V ~ 48V).
- Supports Overload Current Protection / Reverse Polarity Protection.
- Supports wide range operating temperature(-20 degree C ~ 70 degree C).
- Supports alarm contact (relay output - 1 A @ 24 VDC).
- Supports DIN-Rail mount installation.
- Metal case design and compliants with IP30 standard.

# NV-600AI Application Diagram



# NV-700I

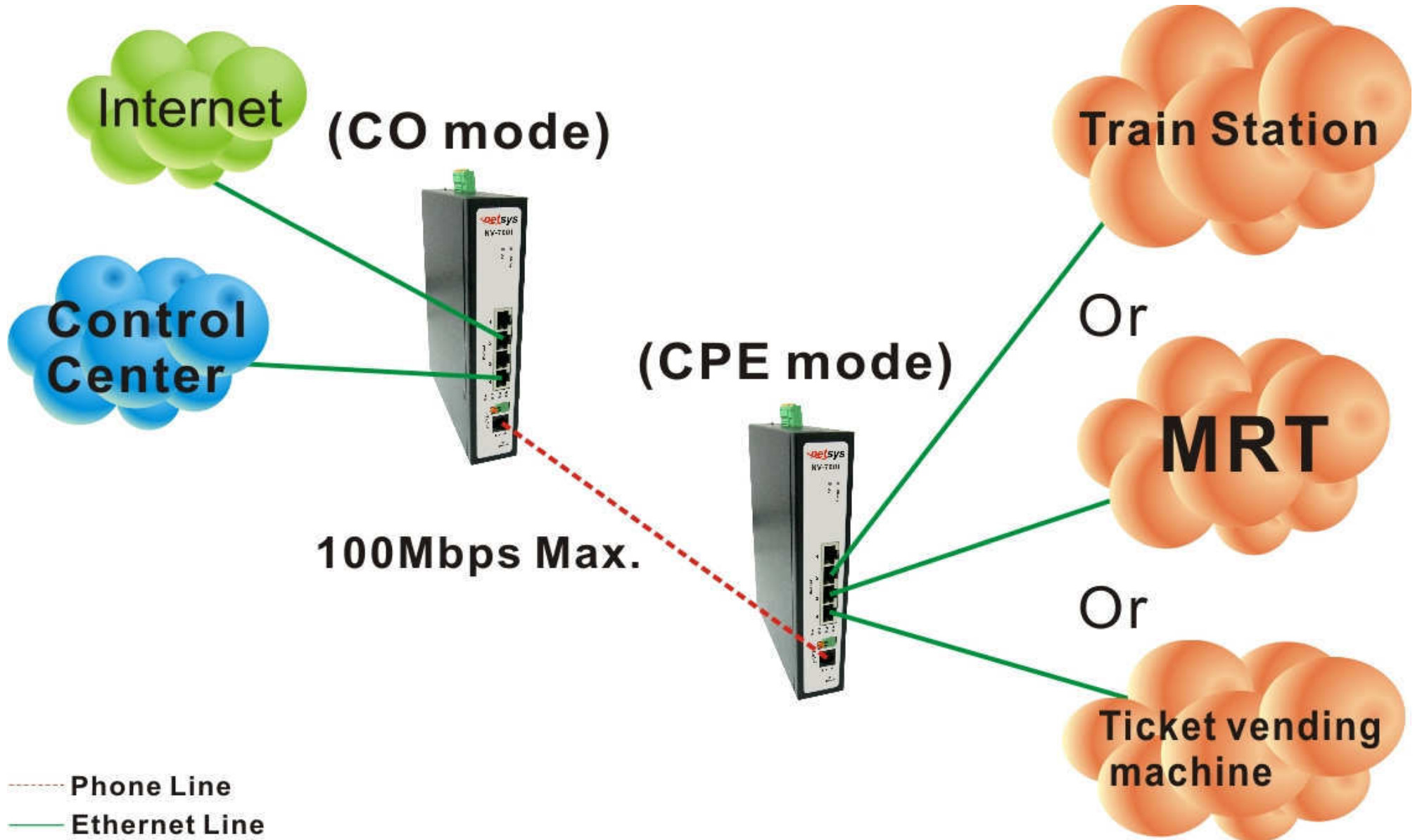
## Managed Industrial Grade VDSL2 CO/CPE Extender

### Benefits & Features:

- Supports wide range 12~48vdc dual power input for power redundant
- Supports wide operating temperature -20 ~70 °C
- Adopts ARM Cortex A9 dual-core processor
- Supports IP30 level metal housing and DIN rail
- Supports RJ11 & Terminal Block combo port
- Supports backup / restore for config setting
- Supports dual firmware for saving firmware upgrading failure
- Supports http/https server for remote web management
- Supports CO(Master)/ Slave(CPE) Mode selectable by Web config
- Supports Jumbo frame up to 2k(MTU)
- Supports 17a/30a profile config
- Supports G.998.4 G.INP
- Supports IPV4/ IPV6 address
- Supports Dual Firmware Image Backup
- On board surge protector for Ethernet and line port
- Supports IGMP snooping V2/ V3
- Supports SSL/ SSH/ TR-069 security
- Supports SPDT relay for connecting alert device
- Supports SNMP VI/V2



# NV-700I Application Diagram



# Reference Site - 1

- Dutch Telekom network
- Motel One Frankfurt Airport, Frankfurt am Main
- Best Western Premier Hotel Steglitz International, Berlin
- Globana Airport Hotel, Leipzig/Halle, Germany
- Express by Holiday Inn, Leinfelden-Echterdingen
- Hilton Garden Inn, Stuttgart
- Hotel Ambassador
- Hotel an der Oper, Berlin
- Nippon Hotel Hamburg, Hamburg
- Banyan Tree Resorts
- Taoyuan International Airport Parking system
- Germany ICE Stations
- University of Cologne
- BAE System – Submarine Solution, England
- Orbe Telecommunications, Spain

## Banyan Tree Resort



## Train station



## University of Cologne





# Reference Site - 2

- Italy Telecom
- Army / Campus / Hospital – French
- Weather station - Germany
- Merchant Ship – Germany
- UK Power Networks (UKPN)
- Jail – USA
- Oil Refinery – USA
- Farm – USA
- Car License identify system – Germany / Taiwan
- Military Training System – Theissen / Meggitt
- Amusement park – USA / Germany
- IP surveillance system – Many countries
- Call Center – Africa
- Camping Sites – Many countries

**Range training Field**



**Amusement Park**



**Oil Refinery**



# ***Best Western Hotel in USA***



# ***Banyan tree Hotel in Seychelles***



# *Submarine*



# *Farm*



# ***Metro & Train Station***



# ***Military Training System***



# 2020 Product Roadmap

**Q1**

**NV-450M/S**

G.fast VDSL2 / V35b  
Master / Slave Modem

**Q2**

**NV-320FX**

Externet Extender  
with 2 Giga LAN  
ports & SFP

**Q3**

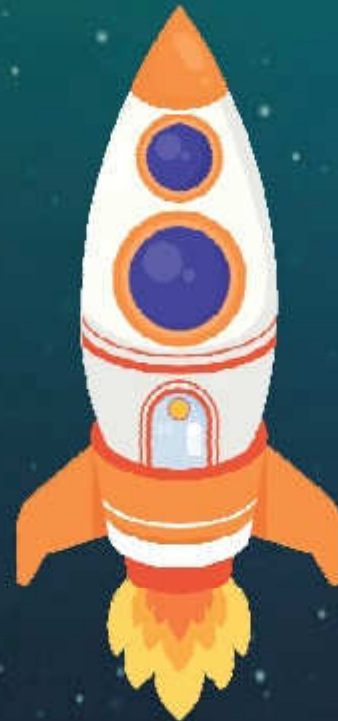
**NV-450I**

Managed Industrial  
G.fast VDSL2 / V35b  
Master / Slave LAN  
Extender

**Q4**

**NV-1000I**

Industrial G.fast/  
VDSL2 Master / Slave  
LAN Extender







Thank You!

<http://www.netsys.com.tw>

TEL:+886-2-6616-2880

FAX:+886-2-8647-1120

[sales@netsys.com.tw](mailto:sales@netsys.com.tw)