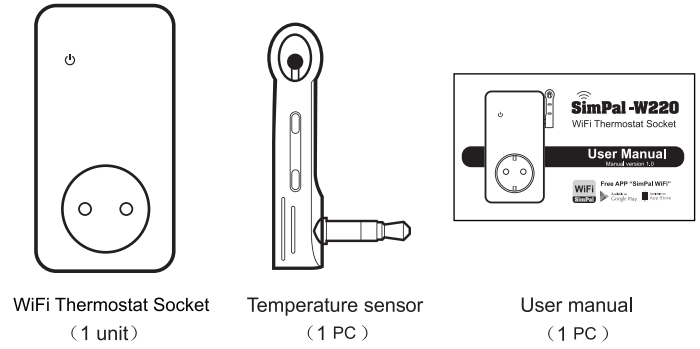
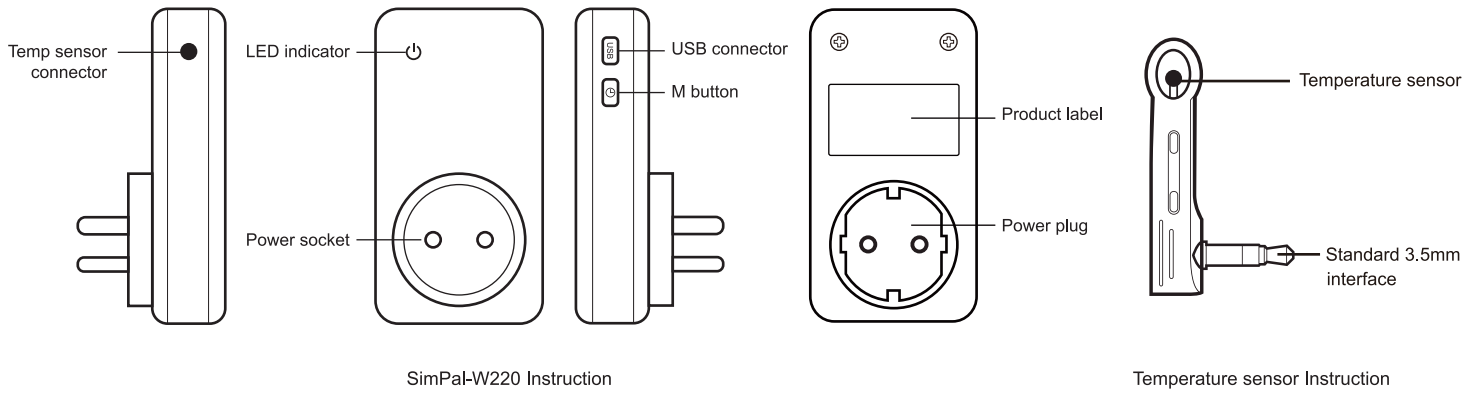


### • 1.1 Package contents



### • 1.2 Sockets instructions



### • 1.3 Light indicator

Color	Power Status	Action	Status
Green	Power OFF	Constant light	Power OFF and work in standby mode
		Flash slowly	Power OFF and lost network connection
Red	Power ON	Constant light	Power ON and work in standby mode
		Flash slowly	Power ON and lost network connection

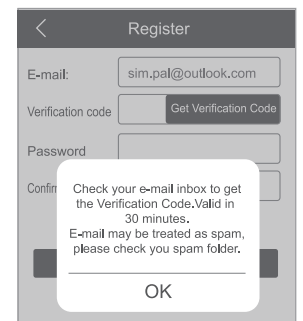
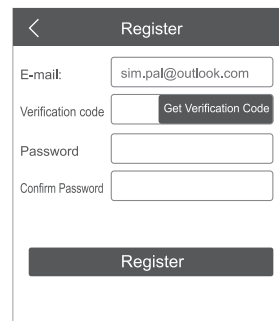
### • 1.4 Beeper

One long beep	Connected WiFi success or Reset factory setting
Beep twice every 5 seconds	WiFi disconnect, waiting set WiFi
Long time no beep	Already connected WiFi and work in standby mode

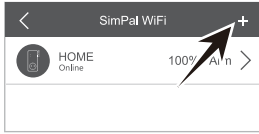
### • 2.1 Install APP and register e-mail account

Download "SimPal WiFi" APP and install on your Android or IOS smart phone. All operation and settings will be done on APP.

It needs to register e-mail account to manage device. Open the APP and click "Register", It will request to input e-mail address, Verification Code and password. After input e-mail address, click "Get Verification Code" button, it will display sending e-mail now. Need to wait few seconds during sending e-mail, when send e-mail success, it will display "Check your e-mail inbox to get the Verification code". Check your e-mail inbox or spam box, e-mail may go to trash box. It can read the code from e-mail and fill on APP. After that, input the password and click "Register" to finish registration. If you can not register, send e-mail wifialarm@qq.com for technical support.



## • 2.2 Set WiFi and register device



The method to set WiFi as following:

1. Power on W220, after hear 5 beeps means WiFi disconnect, it will beep twice every 5 seconds, it means waiting to set WiFi now.

(If the W220 do not beep and only working silence, keep press M button for 10 seconds to reset factory setting. After reset factory setting, it will go to set WiFi mode.)

2. Open APP, click + to add new device, input selected WiFi password, then it will go to mobile phone WiFi setting page. After wait some seconds, you will find it display "WiFi\_Socket" on your WiFi list, manual make your mobile phone connected to "WiFi\_Socket" and back to open the APP. It will auto set WiFi onto W220 and add this device onto your APP.



## • 2.4 Device list

When open APP, it will auto display registered device, and update device status automatically.

The format of device as following:

Device name	Status	Temperature	Power status
-------------	--------	-------------	--------------

- Device name: the name register when add the device. Use to separate different device.
- Status: "online": means this device connected with server, can be control via APP. "offline": means the device disconnect with server, can not be controlled via APP. Device will auto online again when it connected WiFi.
- Temperature: It will show latest environment temperature of this device, auto update every 60 seconds.
- Power status:  
ON: means the socket power output is ON  
OFF: means the socket power output is OFF.



## • 2.6 Temperature settings

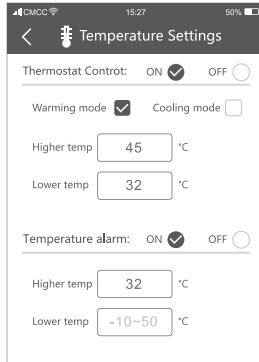
On Temperature settings page, it can set socket working as thermostat, set socket send message when temperature out of setting range.

- Thermostat Control: it can set socket working as thermostat, the function of two working mode as following:

A. Warming mode: when temperature higher than "Higher temp", power will auto turn off. When temperature lower than "Lower temp", power will auto turn on.

B. Cooling mode: when temperature higher than "Higher temp", power will auto turn on. When temperature lower than "Lower temp", power will auto turn off.

- Temperature alarm: set temperature range, when temperature out of range, it will auto send message.



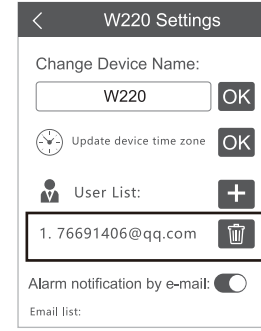
## • 2.8 Device Settings

On "Device Settings" page, it can change device name, update device timezone and set alarm email address.

- Default device name is MAC address, it can change new device name to separate different device.
- Update device timezone: device will auto set timezone according network IP address. Timezone will use when set schedule control. It can set your mobile phone timezone to device by press this button.
- User List: from "User List" to know how many users controlled this device. It can share this device to other users or remove user from device. (Noted: It needs to register this email account on "SimPal WiFi" APP before add this user)
- Email List: Max can set 5 email address to receive alarm information.



## • 2.3 Share device with family

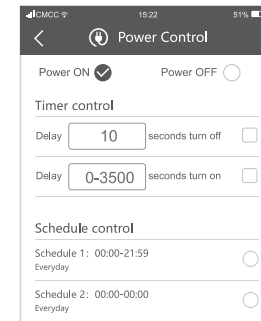


1. Select the W220 device, under "Device Settings", it will show all Users of this device.
2. Click "+" near User List, it will allow to input email address to add other users to control device.

Noted: It needs to register this email account on "SimPal WiFi" APP before add this user.

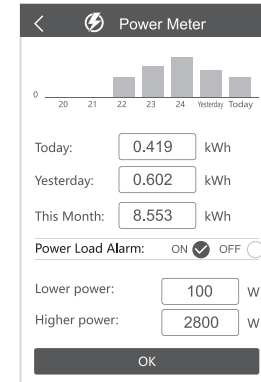
## • 2.5 Power Control

On "Power Control" page, it can remotely on/off power, set delay control power, schedule control power.



- Power ON: turn socket power output on.
- Power OFF: turn socket power output off.
- Timer control: This can set socket start timer control, it can set delay turn on/off power after 1-3600 minutes.
- Schedule control: It allow to set 5 groups schedule control, will auto turn on/off power according the schedule. It allows to temporarily change the power state until the schedule control is executed again at the next time point.

## • 2.7 Power Meter



On "Power Meter" page, it display daily power consumption, set power monitoring load range.

- Daily power consumption: It will display last 7 days power consumption.
- Monthly power consumption: it will display last 6 months power consumption.
- Power alarm: it can set power load range, when power load lower or higher than setting range, it will send message on APP or send email. The power load range is 0-3500W. (It will only send power load alarm when turn power on.)

## • 2.9 Reset factory settings

Reset factory settings will make the device removed from all registered APP account, need to register the device again on APP after reset. Keep press the M button for 10 seconds, device will long beep and reset factory settings.

## • 3.0 Technical Specification

Product size: 120\*60\*40 mm (No included plug)  
 WiFi protocol: 802.11 b/g/n  
 Power input: AC 110~230V  
 Temperature sensor range: -10°C ~50°C  
 Indicator: Power output and wireless signal in Blue  
 Max power loading: 16A or 3500W  
 Standby power consumption: 25mA