

# 4G LTE Alarm Camera

## SimPal-G400

SimPal-G400 4G LTE camera, the simple image capturing devices, integrated telecom 2G/3G/4G module. Special use for place which do not have WiFi. Use APP to get photos or take short video on APP. It can connect 10pcs wireless sensor, will auto send picture or short video to the APP when sensor trigger. Built-in loud sound siren, when sensor trigger, it will sound 100dB alarm tone to scare intruder.

Perfect selection for summer house, home, office, short or warehouse security.



COMING  
SOON..!

SimPal

Xiamen SimPal Communication Technology Co., Ltd local in Xiamen, China. We mainly working on GSM/3G/4G/WiFi intruder alarm system, GSM/WiFi power socket etc products. The R&D engineers have been working on GSM/WiFi products more than 10 years, proficient in hardware design, firmware development.

Quality is the life for the company, we have design exactly product testing flow for each model and make 100% test during production. Top quality product will maintain long term relationship with our customer.

### Main Features:

- Worked on 2G/3G/4G GSM Network, send photos or short video to Mobile APP.
- 2.0M pixels camera lens, high resolution picture or short video on APP.
- External accessories: Work with 10pcs wireless sensor and wireless siren.
- Low cellular data consumption: camera will compress the photo or video size and send out in short time. Very low cellular data request.
- Siren alarm: it will emit 100dB alarm sound when sensor alarm, work as alarm system.
- Built-in lithium battery: Rechargeable battery ensures operation if any external power failures.

### Packing content:

- SimPal-G400 Camera: 1pcs
- PIR motion detector: 1pcs
- Power adaptor: 1pcs
- Door Sensor: 1pcs
- Remote control: 1pcs
- Manual: 1pcs

### Specification:

Model	SimPal-G400
Frequency	4G & 433Mhz
4G bands	LTE FDD: B1, B3, B5, B7, B8, B20 LTE TDD: B38, B40, B41
Camera lens resolution	2M
Support wireless sensor	YES, FSK 433Mhz wireless sensor support 10PCS
Power input	DC12V 1A
Alarm volume	100dB
Wireless sensor working distance	40 meters

### Xiamen SimPal Communication Technology Co.,Ltd.

Add: 3F, No. 2208 Dianqian Industrial Zone, Huli District, Xiamen 361006 China.  
Tel: +86-592-6088626 Fax: +86-592-6088626 Mob: +86-13860499337  
Skype: vincentjiang2008 Web: www.simpal.cn Email: sales@simpal.cn

Xiamen SimPal Communication Technology Co., Ltd.

# < CONTENT >

GSM/ 4G LTE Power Socket

GSM Temperature Monitor  
(GSM Power Failure Alarm)

WiFi Thermostat Socket

GSM Door Opener  
(GSM Thermostat Control)

WiFi Alarm System

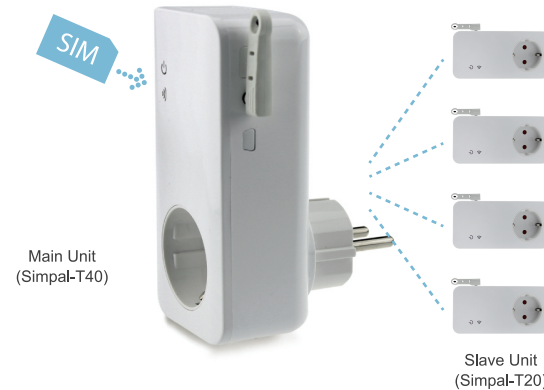
GSM Alarm System

DIN-Rail GSM Power Control

4G LTE Alarm Camera

## GSM / 4G LTE Power Socket

SimPal-T420-F / T420 / T40 / T4 / T20



SimPal GSM power socket is a simple and powerful system to remotely control the power to the electrical devices or electrical outlets at home via SMS or app in mobile. The main unit also functions as an alarm during a power failure or temperature deviations. It can be expanded with four slave units and up to five different power outlets can be individually controlled with only one SIM card. Switching on or off the current can be controlled according to a schedule or with a thermostat function. Connecting 6pcs wireless sensor for alarm function.

### Main Features:

- Work with 2G, 3G, 4G SIM card, remote turn on/off power by calling or send SMS to power socket SIM card number.
- Both main unit and slave units have individual temperature sensors. It allows you to remotely monitor the temperature, thermostat controlling the electrical outlet and get alerts when the temperature deviations from each device.
- The power can be automatically turned on or off if the temperature falls below or exceeds a preset interval.
- Device come with built-in power capacitor. It can send SMS to notify power failure.
- Connect 6pcs wireless sensor, send SMS alarm when door open or detect human motion.
- The devices install quickly in just minutes. All it takes is a SIM card to the main unit.
- Devices with a consumption of up to 16A or 3600W can be connected on power socket.

### Specification:

Model	SimPal-T420-F	SimPal-T420	SimPal-T40	SimPal-T4	SimPal-T20
Product size	12.5×6.0×3.8cm	12.5×6.0×3.8cm	12.5×6.0×3.8cm	12.5×6.0×3.8cm	12.5×6.0×3.8cm
Work frequency	2G, 3G, 4G & FSK 433Mhz	2G, 3G, 4G	2G & FSK 433Mhz	2G	FSK 433Mhz
Work with SIM card	YES	YES	YES	YES	NO (Only work as slave socket)
Temperature function	YES	YES	YES	YES	YES
Working with slave socket	YES (Max 4 slave socket)	NO	YES (Max 4 slave socket)	NO	---
Wireless sensor alarm	YES, (Max 6pcs)	NO	YES, (Max 6pcs)	NO	NO
Power failure alert	YES	YES	YES	YES	NO
Max power loading	16A 3500W	16A 3500W	16A 3500W	16A 3500W	16A 3500W

### Optional Accessories:



DS18B20 temperature sensor



WIR-053-F PIR detector



WDS-051-F Door sensor



WLD-061-F Water detector



WSI-055-F Wireless strobe siren

Note: these sensors can work with all SimPal product which support FSK 433Mhz function.

# GSM Temperature Monitor (GSM Power Failure Alarm)

SimPal-T2 / SimPal-T200



SimPal-T2 is the simple DIY temperature monitor and power failure alarm device, come with GSM module, temperature sensor, use to monitor environment temperature and power status, only need to install SIM card and plug into wall socket, then it can report temperature value by SMS to user's mobile phone. Connect with external higher accuracy external temperature sensor, the sensor can put inside water or extremely high/ low environment. It can use to monitor power sources, automatically send SMS when mains power lost or restore.

## Main Features:

- Send SMS to check current room temperature value.
- Easy set temperature range, device will auto send SMS when temperature out or back the setting range.
- Come with waterproof cable temperature sensor, 2 meters cable length, -30 to 100C wide temperature range.
- Power failure alert: device will send SMS once power lost or restore.
- EU, AU, UK and US plug available.

## Packing content:

- Temperature Monitor: 1pcs
- Cable temperature sensor: 1pcs



## Specification:

Model	SimPal-T2	SimPal-T200
Product size	111*57*70mm	111*57*70mm
Working frequency	2G (850/900/1800/1900Mhz)	2G, 3G, 4G LTE
Inner temperature sensor range	-10 C~+50 C	-10 C~+50 C
Cable temperature sensor range	-30 C~+100 C	-30 C~+100 C
Power failure alarm	Yes, max send SMS to 5 mobile numbers.	Yes, max send SMS to 5 mobile numbers.
Power input	110~230V 50/60Hz	110~230V 50/60Hz
Standby power consumption	13mA 0.156W	13mA 0.156W
Working environment	-10 C~+50 C	-10 C~+50 C

# WiFi Thermostat Socket

SimPal-W230 / SimPal-W230-F



SimPal-W230 WiFi Socket come with temperature sensor, it can real-time display room temperature on mobile phone APP; can be work as thermostat to automatically turn on/off power according room temperature. Extremely big power loading design, max allow 16A 3500W power loading.

## Main Features:

- Remote turn on/off power via APP, support timer control, schedule control.
- Real-time room temperature display on mobile phone APP, send message on APP or send email when temperature out of setting range.
- Work as thermostat, auto turn on heater power when temperature is low; auto turn off heater power when temperature is high.
- Working with wireless sensor for auto power control and alarm function. For example: auto turn on power for 1 minutes when detect human motion. (Only W230-F model support)

## Specification:

Model	SimPal-W230	SimPal-W230-F
Product Size	125*60*80 mm (EU plug)	125*60*80 mm (EU plug)
Plug and Socket type	Germany, French, UK, US available	Germany, French, UK, US available
Frequency	2.4G WiFi	2.4G WiFi & FSK 433Mhz
Max loading	16A 3500W	16A 3500W
Standby power consumption	40mA	40mA
Temperature sensor range	-10 C~50 C	-10 C~50 C
Intruder alarm	No support	Yes, max support 10pcs wireless sensor. When door open or detect human motion, will send message on APP.
Wireless sensor control power	No support	Yes, when detect motion, it can turn on power for some minutes.

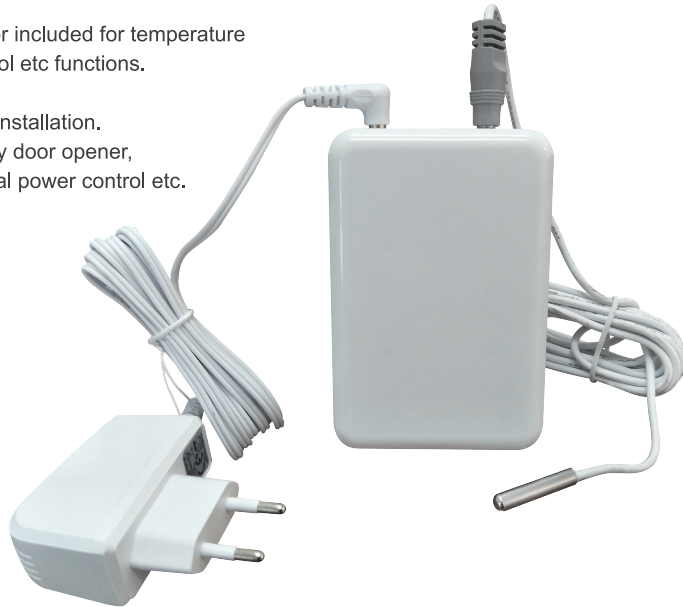
# GSM Door Opener (GSM Thermostat Control)

## SimPal-D310

SimPal-D310 is a remote-control device use for open electricity door or gates. It can simple replace your gate/door opener button and open your door with free phone calling. Two 16A latching relay can be use to control two lines signal.

Cable temperature sensor included for temperature monitor, thermostat control etc functions.

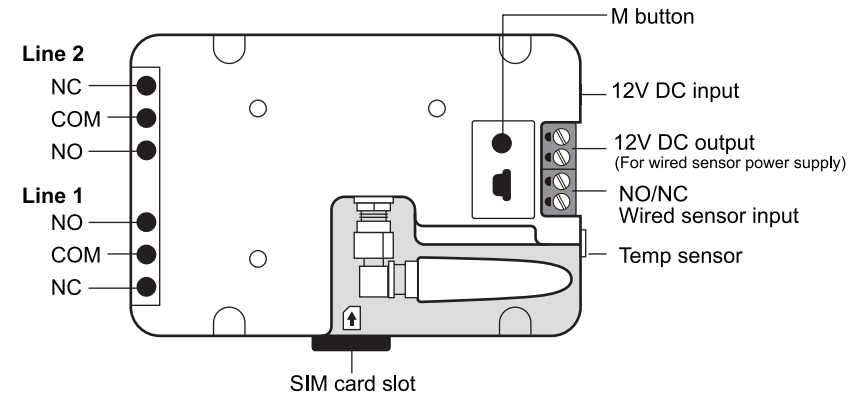
Fashion design and DIY installation.  
Good choice for electricity door opener,  
heater controller, industrial power control etc.



## Main Features:

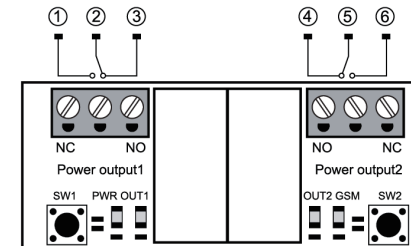
- Work with GSM SIM card, use mobile phone calling to open the door, no need cost when calling open the door.
- Two lines control: two 16A latching relay inside to control two lines signal. Only one SIM card to control two lines signal.
- Temperature sensor included for each device, use for temperature monitor or thermostat control when connected electricity heater on this device.
- Power failure alarm: automatic send SMS when power lost or power restore.
- Intruder alarm: one wired sensor support (Wired sensor need to buy separately), when sensor trigger, send SMS alarm.
- Big quantity number support: max store 200 users to control the device.
- Can be connect external cable GSM antenna when install inside metal box.

## Main Features:



## Working principle

Each relay has three terminals: COM, NO and NC, middle COM terminal will connect NO or NC terminal. When SMS reply power ON, COM terminal connect with NO terminal and disconnect with NC terminal; when SMS reply power OFF, COM terminal connect with NC terminal and disconnect with NO terminal.



**Use to open door:** When user press button to open door, its make button two lines connect 1-2 seconds, then disconnect. It can connect two lines to COM and NO terminal, calling the device, it will connect COM and NO terminal for 3 seconds; then its like you press the button and open the door.

**Use to control power:** It can connect 220V Fire lines input onto Line-1 NO terminal; connect 220V Zero line input onto Line-2 NO terminal; connect output onto Line-1 and Line-2 COM terminal. Then it can send SMS to turn on/off power; also can set thermostat control to make power auto on/off according temperature settings.

## Technical parameters

GSM frequency	850/900/1800/1900Mhz
Power input	12V DC
Relay control	SMS or phone calling
Relay type	16A Latching relay 2pcs
Max loading	16A 3500W
SIM card	PUSH SIM slot, Normal Size SIM 1.8V/3.0V socket;
Indicators	Three blue LED, GSM indicator/Line1 output/Line2 output
Temperature sensor	DS18B20, -30—100 degree.
Wired sensor type	NO/NC trigger (no need power input)
Operating temperature	-30~+50 C

# WiFi Alarm System

SimPal-W240

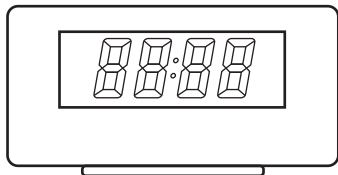


SimPal-W240 WiFi Alarm System is simple DIY home alarm system. Work on WIFI network, connect up to 20pcs wireless sensor, once sensor trigger, main panel will make loudly sound and send message on APP or send email to inform user.

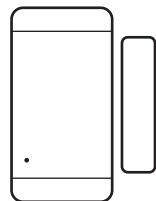
It can be easy set panel work in different mode, also can be set schedule arm/disarm.

Compacted and fashion design, simple operation. Good choice for home intruder alarm and elderly care alarm.

## Package Included:



Alarm panel  
1 pcs



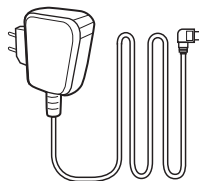
Door/Window sensors  
1 pcs



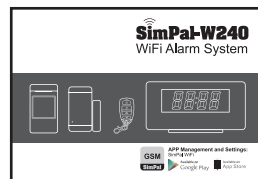
PIR detector  
1 pcs



Keychain remote controls  
1 pcs



AC power adapter (5V)  
1 pcs

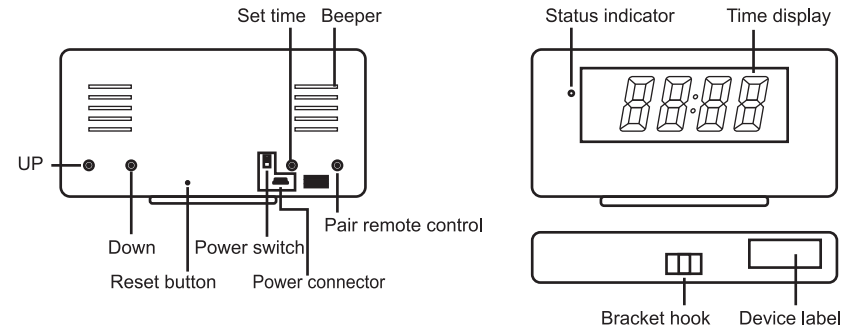


User manual  
1 pcs

## Main Features:

- **Work with wireless sensor:**  
Connect up to 20pcs wireless sensors, such as door magnet, pir sensor, smoke sensor, gas sensor etc. SimPal-W240 will send message on APP or send email to inform alarm.
- **FSK wireless transmission:**  
main panel and wireless sensor communicate with two-ways FSK protocol, it makes sensor transmit more safety and work longer distance.
- **Two alarm tone:**  
Can be set sensor sound alarm tone or doorbell chime.
- **Big backup battery:**  
1500mAh lithium battery, it can make device working more than 10 hours even power cut off.
- **Power lost alert:**  
E-mail notification when power lost or restore. Rechargeable battery ensuring operation in case of external power failure.

## Product structure:



## Working mode and sound tone:

Type Mode \ Sensor	Alarm sensor	Home sensor	Emergency sensor
Arm mode	Alarm	Alarm	Alarm
Home mode	Alarm	—	Alarm
Disarm mode	—	—	Alarm

## Technical Parameter:

Alarm panel size	138*70*25mm
Stand bracket size	80*32*12mm
Time display size	23*70 mm
Product weight	147g
Power adapter	DC 5V 1A
Power adaptor connector	Mini USB
Lithium ion battery	1500mAh
Standby time of the battery (Depending on network)	10 hours
Work frequency	WiFi 802.11 b/g/n 2.4G
Receive code of Wireless sensor	FSK
Wireless sensor working frequency	433.92 MHZ
Max quantity of sensor	20 PCS
Effective range of sensor	30-50 meters
Built-in Siren	105 dB
Work temperature	-10 C ~ +50 C
Storage temperature	-20 C ~ +60 C

# GSM Alarm System

## SimPal-G212

SimPal-G212 GSM Alarm System is the hidden alarm system with digital time display. Main unit working on GSM network, it will send SMS and make voice call when wireless sensor detect intruder. Built-in high volume siren, it will make a loud noise to intimidate the intruder. Support max 20pcs wireless sensor, DIY install wireless sensors to monitor home safety.



### Main Features:

- Working on GSM network, automatically send SMS and make calling when door open or detect human motion.
- Main panel connecting up to 16pcs wireless sensor, panel will alarm when sensor trigger. Work with slave socket: can be connect 2pcs slave socket, each socket come with temperature sensor for temperature alarm and thermostat control.
- Power failure send SMS alarm and backup battery can work 10 hours.
- Easy configure alarm system by remote control or mobile phone APP.

### Standard packing content:

- Alarm Panel: 1 PCS
- Remote control: 2 PCS
- Door magnetic: 1 PCS
- PIR detector: 1 PCS

### Technical parameters

Model	SimPal-G212
Product Size	138*70*25mm
Time display size	23*70 mm (four digital number display)
Work frequency	2G & FSK 433Mhz
Power adaptor	5V DC
Sound tone	Alarm tone and Doorbell tone (105dB)
Mas sensor quantity	20 PCS
Work with wireless power socket	YES, work with 2pcs SimPal-T20 slave socket
Wireless sensor working distance	30-40 meters

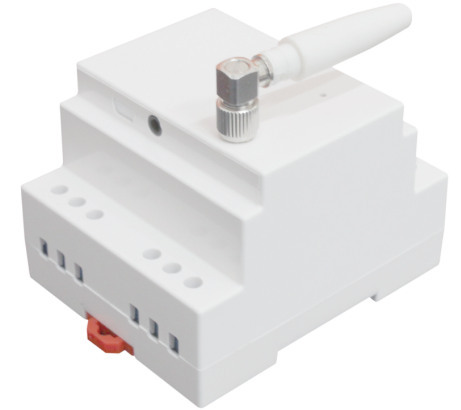
# DIN-Rail GSM Power Control

## SimPal-D210

SimPa-D210 GSM Power Control working with SIM card, compact power transformer design, 110-230V AC power input, both 110-230V AC and 12V DC power output; Use mobile phone to turn on/off power output.

Work with two wired sensor and one siren, once sensor trigger, auto turn on siren and send SMS alarm. External temperature sensor to report temperature value SMS to your mobile phone.

Apply for heater power control, gate opener, security alarm etc.



### Main Features:

- Work with SIM card, send SMS or calling to turn on/off power output.
- Compact transformer design, 230V AC input, both 230V AC and 12V DC output, no need extra power adaptor.
- Temperature sensor: support temperature alarm and thermostat power control.
- Schedule or timer control: auto on/off power according setting schedule or turn on/off power for some minutes.
- Sensor alarm: two lines NO/NC type wired sensor input and one 12V DC output, when sensor trigger, auto turn on siren and send SMS alarm..
- Two 16A relay, cut off both nature wire and live wire when power turn off. 16A 3600 big power loading.

### Specification:

Product size	90*70*73mm (No included GSM antenna)
Max power loading	16A 3500W (Two lines control)
Power input	AC 110~230V
Power output	AC 110~230C, DC12V (max 200mA)
GSM frequency	850/900/1800/1900Mhz
Temperature sensor type	DS18B20
Temperature sensor range	-30 to 100 degree
SIM card slot	standard size SIM card
Wired sensor input	NO (normal closed) or NC(normal open)
Working temperature	-10 to 35C