



eWeLink



Wi-Fi



Alexa



Google Assistant

# WIFI SMART METERING CIRCUIT BREAKER

Remote control at any time from any where

Circuit breaker | Energy meter | Timer



# OPEN A NEW ERA OF INTELLIGENCE

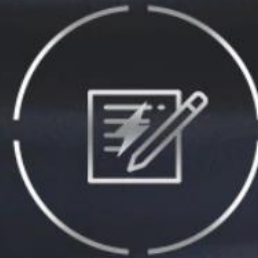
POWER FACTION, LET ME TELL YOU



WIFI  
SMART NETWORKING



MOBILE  
CONTROL



ELECTRICITY  
RECORD



TIMING  
FUNCTION



SHARING



VOICE  
CONTROL



OVER VOLTAGE  
PROTECTION



OVER CURRENT  
PROTECTION



REAL POWER  
PROTECTION

# MEET THE FUTURE AI LIFE LET YOUR HOME KNOW YOU BETTER

Check the electricity consumption of the house through your phone  
anytime and anywhere.



Set power unit price ,  
can calculate  
house device power  
consumption.





# REMOTE CONTROL AT ANYTIME FROM ANYWHERE

CHANGE ORDINARY HOUSEHOLD INTO SMART DEVICE



# SCHEDULEL/TIMER/LOOP TIMER REGULAR LIFE


You can set switching time of electric appliances without manual operation.



**06:30**

**TURN ON THE WATER HEATER  
REGULARLY  
THERE IS WARM WATER**

Get up at 7:00, turn on the water heater at 6:30,  
take a comfortable bath with warm hot water




The image shows a woman in a white nightgown standing by a window, looking out. In the foreground, a smartphone displays the 'Timer' app interface. The app shows a list of timer options: 20 Minute, 25 Minute, 30 Minute (selected), 35 Minute, and 40 Minute. Below the list, there is an 'Add action' field and an 'ON' toggle switch.

**22:30**

**TURN OFF THE LIGHTS REGULARLY  
AND FALL ASLEEP AT EASE**

Sleep delay 30 minutes at 22:00  
The light will automatically turn off  
when the set time is up



The image shows a hand holding a smartphone displaying the 'Loop timer' app interface. The app shows settings for a loop timer: 'Loop method' (set to 'Repeat'), '0:00Minute', 'From' (set to '22:00'), and an 'Enabled' toggle switch that is turned on.

# VOICE CONTROL FUNCTION

No matter how busy you work,  
you can monitor the power at any time



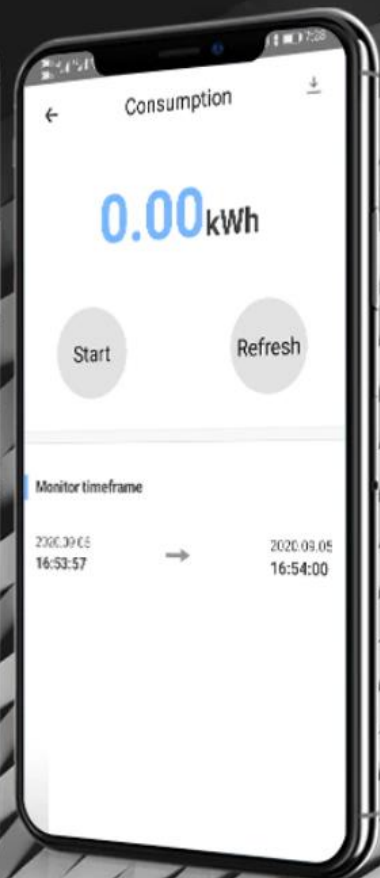
Ok, Already opened for you

Alexa ,Turn on the Table lamp



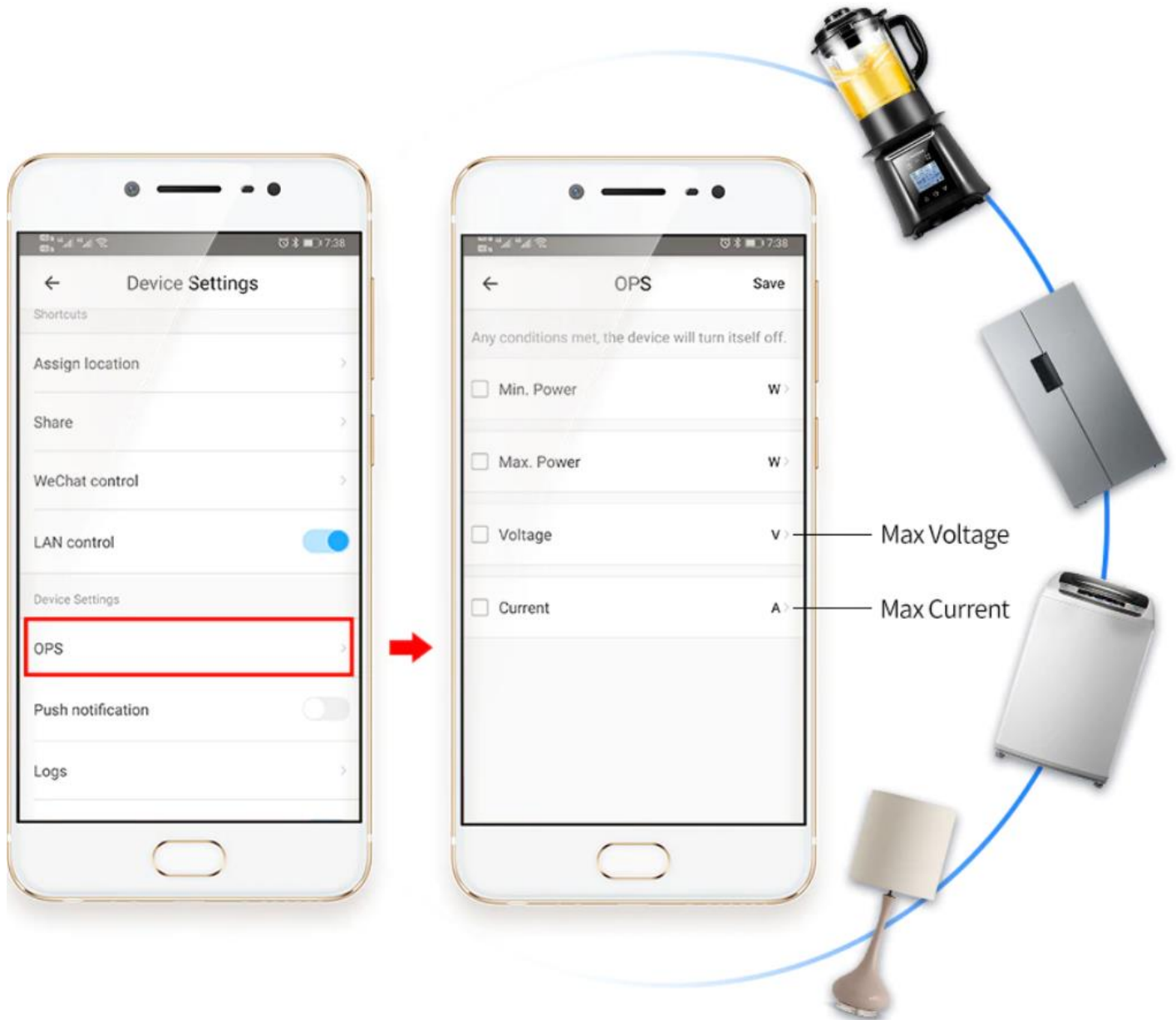
# CHECK POWER CONSUMPTION THROUGH YOUR PHONE AT ANY TIME

Remote control on and off





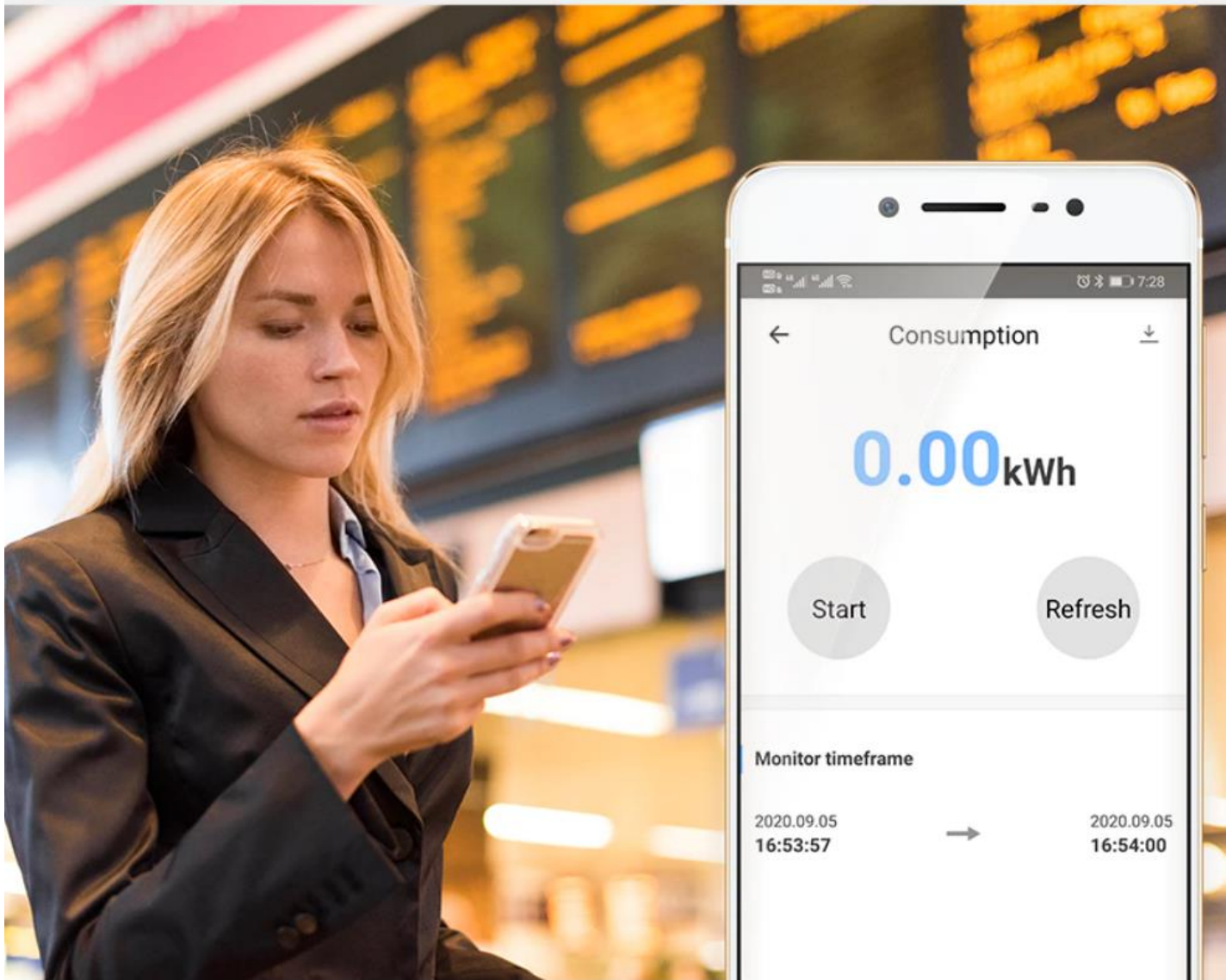
Preset power current/voltage threshold values by app  
Once the real-time power current/voltage reaches the threshold values, The connected electrical appliances will be automatically turned off





# REALTIME STATISTICS

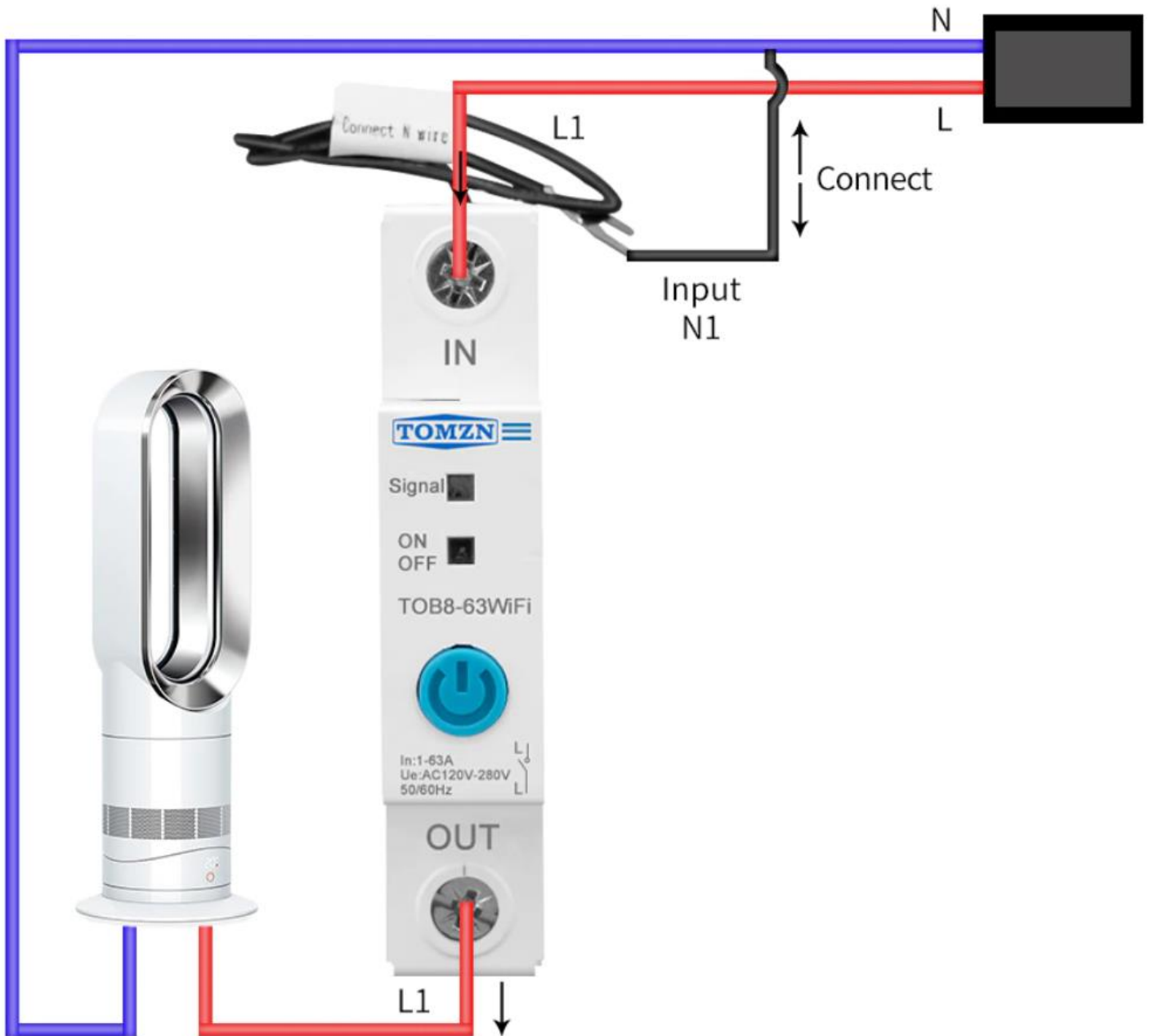
Energy monitoring anytime, anywhere



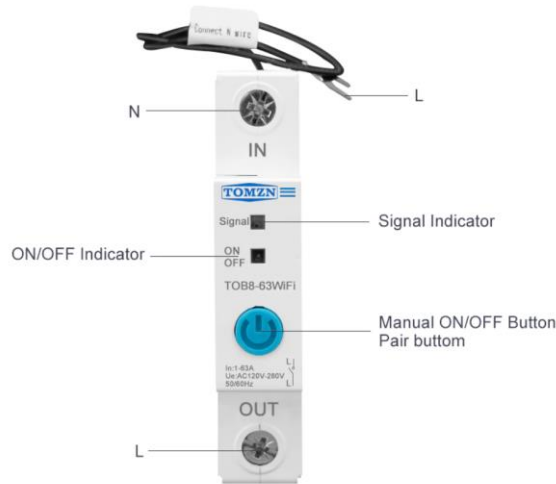
# RAIL MOUNTING



# EASY INSTALLATION



## PRODUCT APPEARANCE DISPLAY





# PRODUCT PARAMETER

Product Item: WIFI Smart Switch and Energy Meter

Product Model: TOB8-63WIFI

Rated Current: 63A max

Connect: WIFI 2.4G

Certificate: CE

Rated Voltage: 230V

Installation: 35 Din Rail

