

SMART WIFI ENERGY METER SWITCH

REMOTE CONTROL



TuyaSmart



Smart Life



WI-FI

Wi-Fi



Alexa



Google Assistant



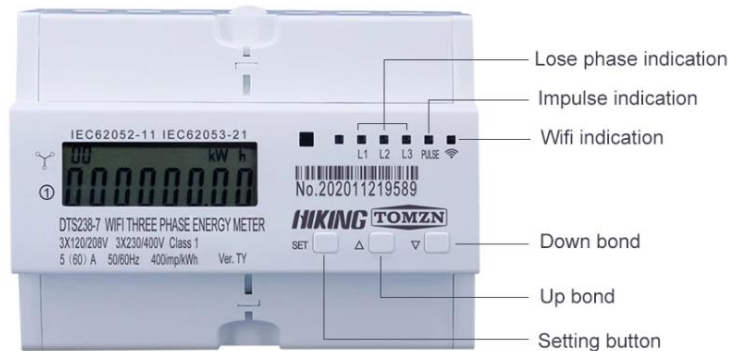
Power Faction, Let Me Tell You

SMART WIFI ENERGY METER



3 PHASE WIFI ENERGY METER

Meter type	DTS238-7 WIFI TY	Limits voltage range	70%Un~120%Un
Rate frequency	50-60 Hz	kWh Accuracy	Class 1
Rated current	5(60)A 60A MAX. START CURRENT 20MA	R.M.S accuracy	Class 0.5
Normal voltage range	90%Un~110%Un	Pulse constant	See meter
Rate voltage	3x120/208V , 3x220/380V , 3x230/400V , 3x240/415V		
WIFI	802.11b/g/n , only support 2.4GHz network , not support 5GHz network		



	WIFI led indication, if you push the setting button last 10s, the WIFI led will flash 1s interval ,its means meter enter into the status of waiting for WIFI distribution network . if WIFI led light on all time ,it means meter connect the WIFI successfully.
	Impulse led indication: it will flash with different speed according the current load of the meter
	Relay off signal: the signal display on LCD means meter relay switch off.
SET	Setting button: you can push this button last 3s enter into change the MODBUS-RTU ID and baudrate of Rs485 port.
△	Up bond: it used for display step by step and setting value under setting mode.
▽	Down bond:it used for display step by step and setting value under setting mode.if you push this button last 10s,meter will eneter into the the status of waiting fo wifi distribution network.

ON-SCREEN DISPLAY EXPLANATION

		
1.Impulse constant	2.Total active energy	3.Export active energy
		
4.Interval active energy	5.A phase real current	6.B phase real current
		
7.C phase real current	8.A phase real voltage	9.B phase real voltage
		
10.C phase real voltage	11.Total conjunction active power	12.A phase real active power
		
13.B phase real active power	14.C phase real active power	15.Total conjunction reactive power
		
16.A phase real reactive power	17.B phase real reactive power	18.C phase real reactive power
		
19.Total conjunction power factor	20.A phase real power factor	21.B phase real power factor
		
22.C phase real power factor	23.Frequency	

LARGE-SCALE ELECTRICITY SAFETY DETECTION



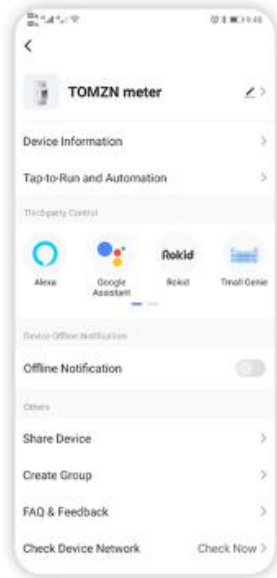
REMOTE CONTROL

NO MATTER HOW BUSY YOU WORK, YOU CAN MONITOR THE POWER AT ANY TIME



IT CAN CONNECT TO SMART SOUND EQUIPMENT TO CONTROL ON/OFF

UNLIMITED TIME DISTANCE CONTROL AT ANY TIME AND PLACE



VOICE CONTROL FUNCTION

NO MATTER HOW BUSY YOU WORK, YOU CAN MONITOR THE POWER AT ANY TIME

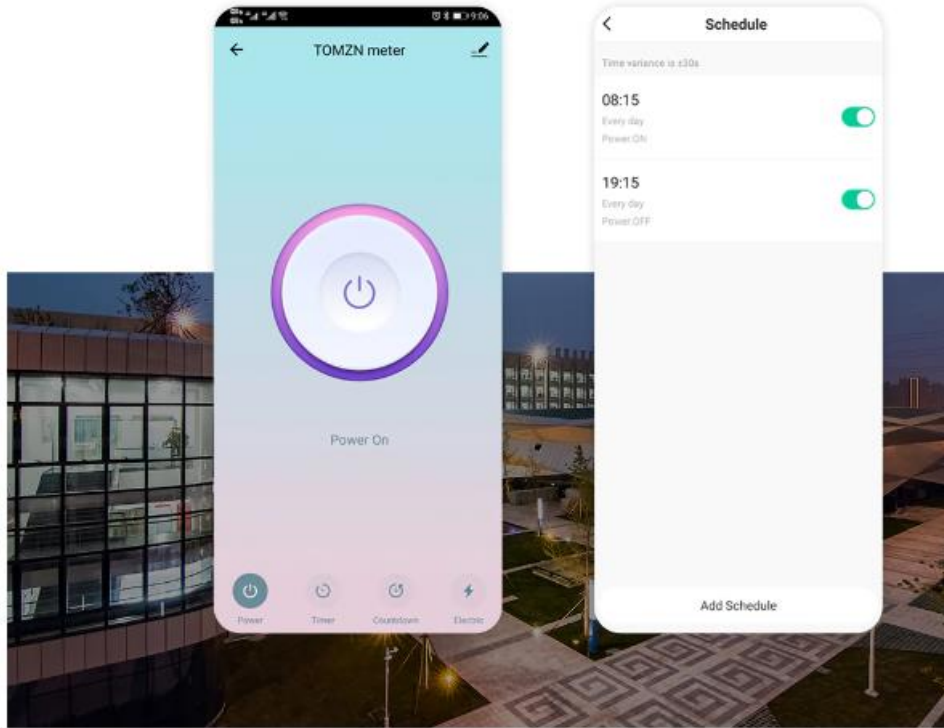
*Hey Google,
Turn on SAUNA!*

OK!



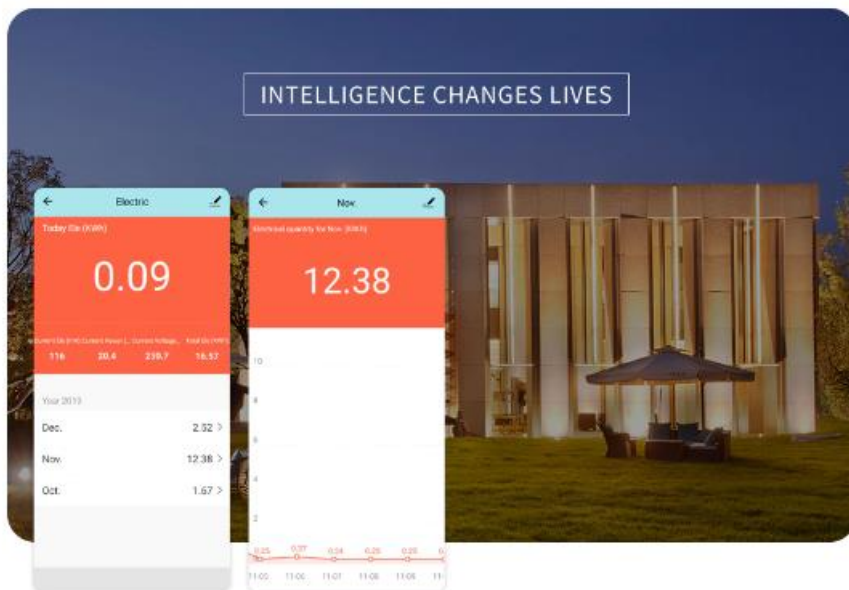
TIMER CONTROL FUNCTION

YOU CAN USED APP SET DIFFERENT TIME PERIOD FOR TIMER CONTROL AND REMOTE CONTROL ON/OFF FOR LIGHTING , MACHINE OR OTHERS CIRCUIT



HISTORY ACTIVE ENERGY CONSUMPTION RECORDS AND CHECK THE R.M.S CURRENT/VOLTAGE/ACTIVE POWER

SPECIAL LARGE-SCALE INTEGRATED CIRCUIT AND SMT TECHNOLOGY FOR MEASURING ELECTRIC ENERGY ARE ADOPTED TO ENSURE THE ACCURACY AND RELIABILITY OF MEASUREMENT



IT CAN SHARE THE APP WITH DIFFERENT PEOPLE TO USE

YOU CAN USED APP SET DIFFERENT TIME PERIOD FOR TIMER CONTROL AND REMOTE CONTROL ON/OFF FOR LIGHTING , MACHINE OR OTHERS CIRCUIT



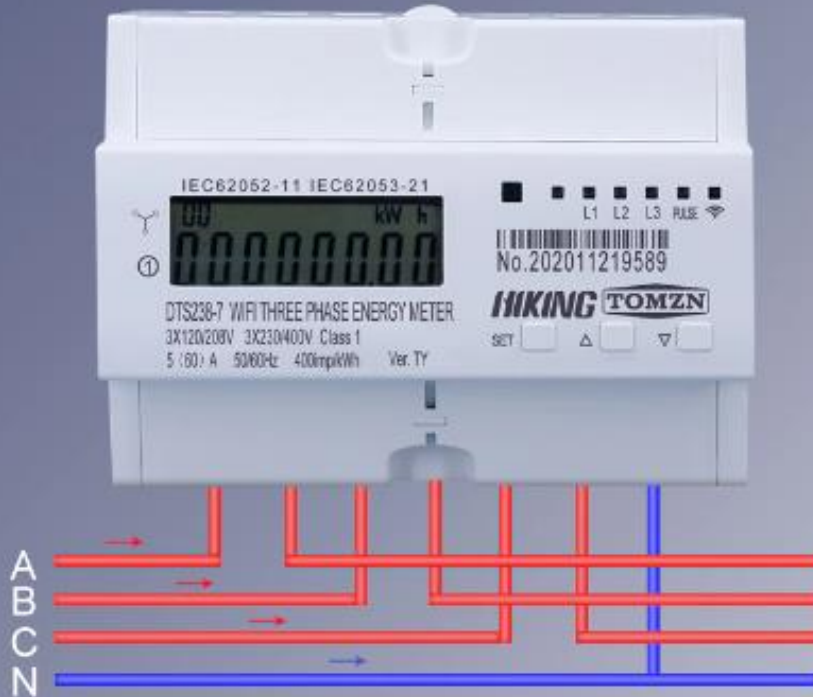
SIMPLIFY YOUR LIFE SAVE ENERGY

safer and helps to save energy in residential, office, commercial and industrial buildings



EASY INSTALLATION

Simple design, easy installation and easy operation

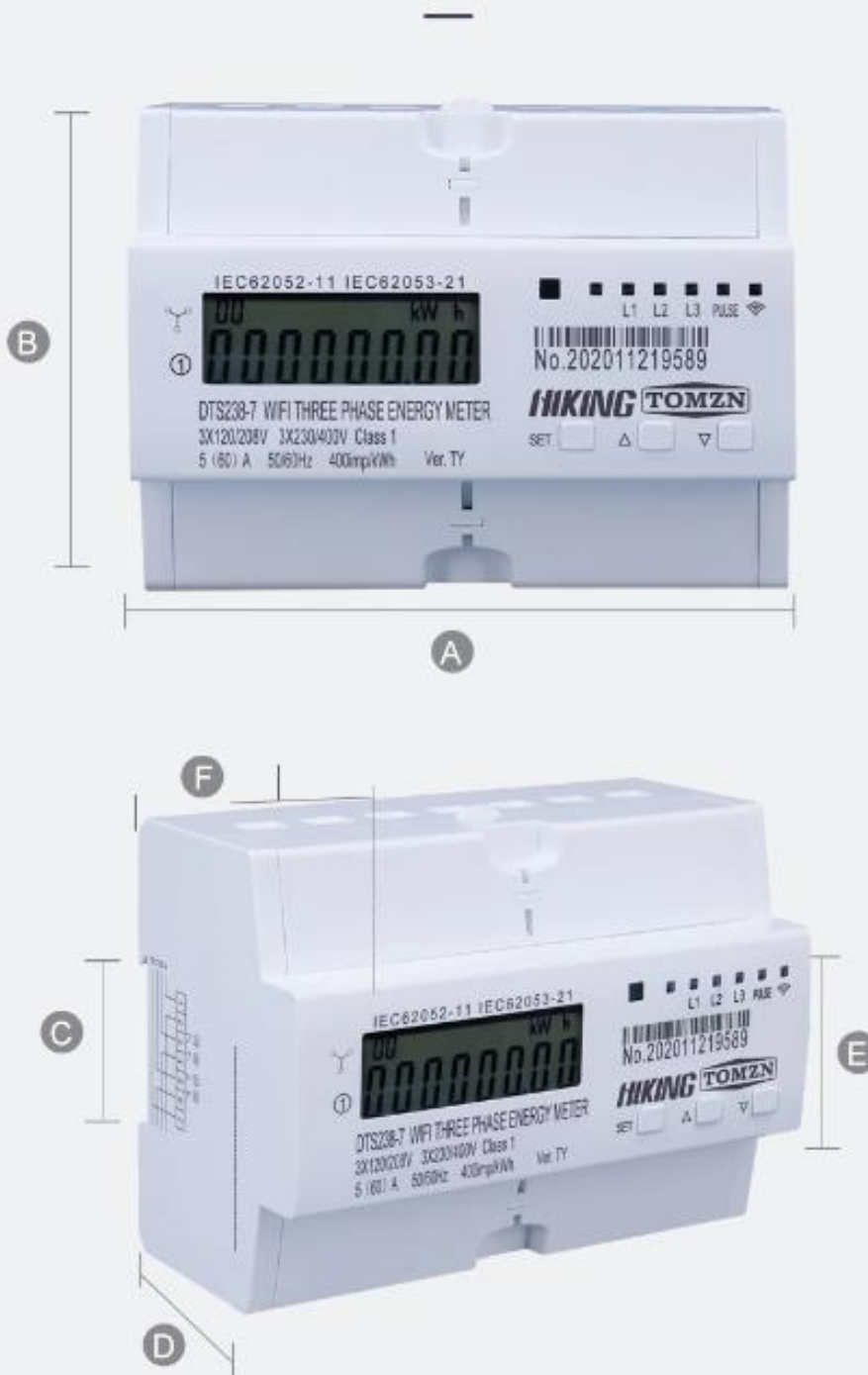


Puncture connection



Rail mounting

DIMENSION DIAGRAM



A Length (mm)	126	D Length (mm)	52
B Height (mm)	98	E Height (mm)	45.5
C Height (mm)	35.5	F Length (mm)	78

“SMARTLIFE”SOFTWARE INSTRUCTION

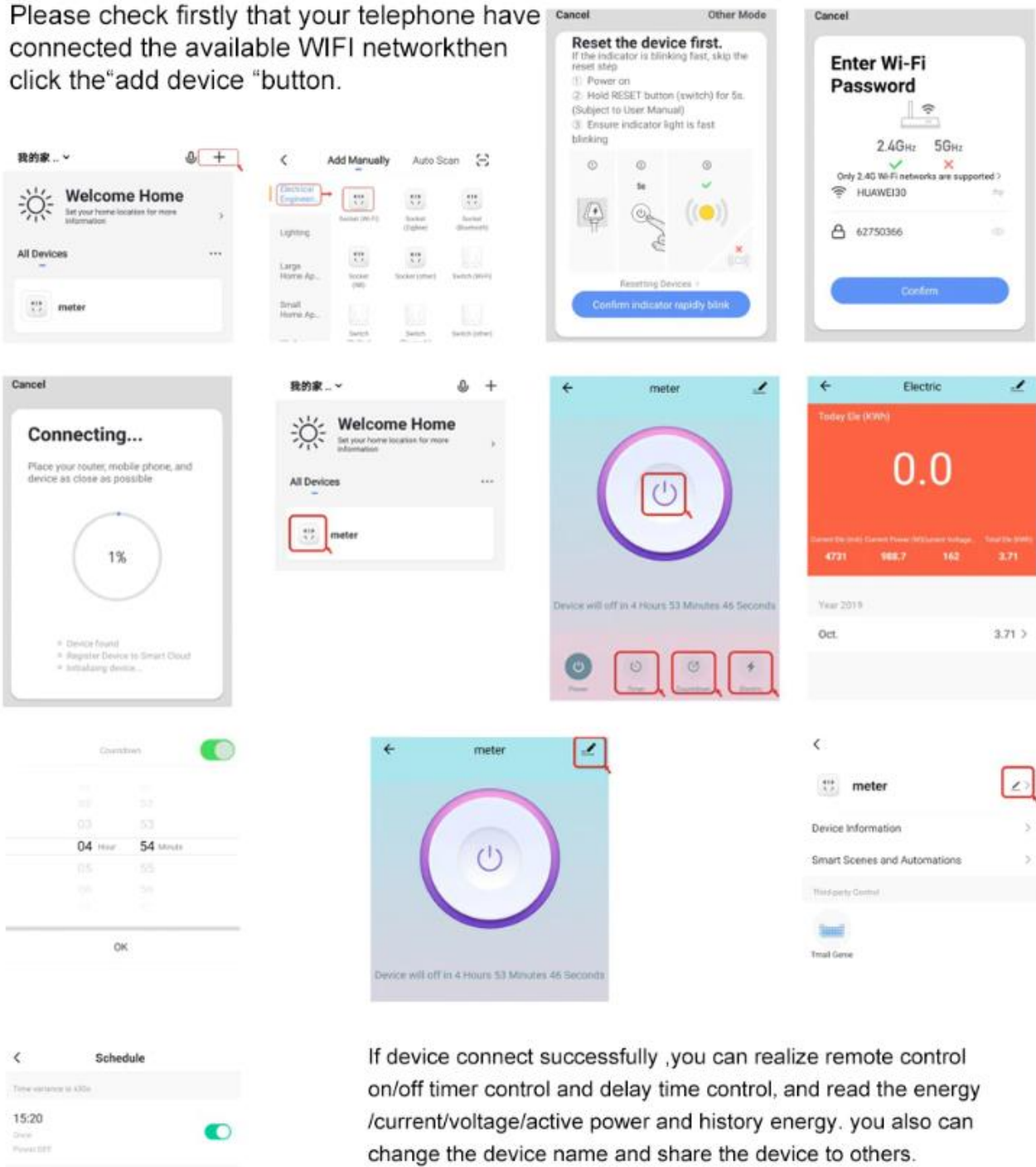
1. Please download the “SMART LIFE” software from google play or app store

2. Meter input power

When the meter power on, you can push the setting button last 5s, meter enter into the status of waiting for WIFI distribution network and the WIFI led will flash Is interval . its means meter enter into the status of waiting for WIFI distribution network .

3. Add device

Please check firstly that your telephone have connected the available WIFI network then click the “add device “button.



If device connect successfully ,you can realize remote control on/off timer control and delay time control, and read the energy /current/voltage/active power and history energy. you also can change the device name and share the device to others.