

SimPal-TY150

WiFi Water Valve

User Manual

Manual version 1.1

Download APP "Smart Life"



Available on
Google Play

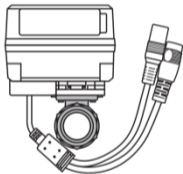


Available on
App Store

CONTENT

1.1 Package contents	2
1.2 Valve instruction.....	3
1.3 Light indicator.....	4
2.1 Install APP and add device.....	5
2.2 Control the valve	7
2.3 Water leakage control.....	9
2.4 Power lost valve status	10
2.5 Wireless sensor control	11
2.6 Schedule control	14
2.7 Reset factory settings	15
3.0 Technical specification.....	15

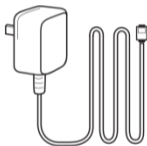
1.1 Package contents



WiFi water vale
(1 PCS)



Water detector
(1 PCS)

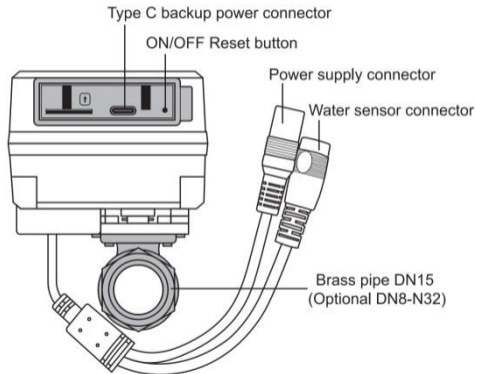


Power adapter
(1 PCS)



User Manual
(1 PCS)

1.2 Valve instruction



1.3 Light indicator

Color	Valve Status	Action	Status
Green	OFF	Flash fast	WiFi network lost
		Breath flash or constant light	WiFi connected and work in standby mode
Red	ON	Flash fast	WiFi network lost
		Breath flash or constant light	WiFi connected and work in standby mode

2.1 Install APP and add device

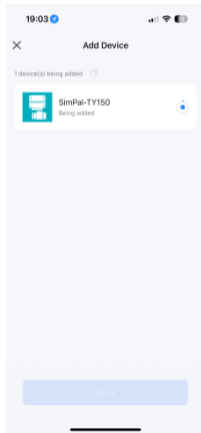


Devices to be added: 1



SimPal-TY150

Add

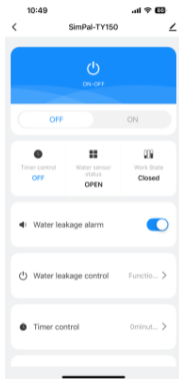


Download Tuya “Smart Life” APP and install on your Android or iOS smart phone. All operation and settings will be done on APP.

The method to add device as following:

1. Power on the TY150 WiFi valve, the LED will flash fast. Press the M button on water valve, then it will turn on valve and enter WiFi setting mode.
2. Register the APP account and log in, after log in, click “+” icon to add device.
3. It will auto display “Discovering devices...”, click “Add” button to add this device, select local WiFi SSID and input Password, then it can add device success.

2.2 Control the valve



1. Control valve by press button: Press “ON-OFF Reset” button for 1 second, it can manually change valve status.

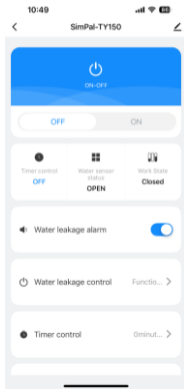
2. Control valve by APP: Press the top “ON-OFF” button to turn on/off water valve. After it process success, Work state will display “Closed” or “Opened”, it means valve already closed or opened success.

2. It can see water sensor status on APP, when it show OPEN, means does not detect water. When it show CLOSE, means water detected.

3. When device under Timer control, it will show

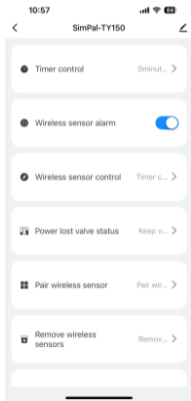
ON under “Timer control” icon.

2.3 Water leakage control



1. When set Water leakage alarm on, it will send notification when water sensor triggered.
2. Water leakage control means when water sensor trigger, it will turn on/off valve. It has three modes: turn on valve, turn off valve or timer control. When set timer control when water sensor trigger, it will process timer control to turn on valve for some minutes. The time duration is same as last timer control settings.
3. Timer control: it can turn on valve for some minutes.

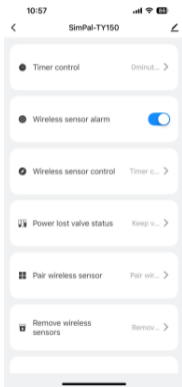
2.4 Power lost valve status



1. Use to set valve status after power lost. It can set turn on valve, turn off valve or keep valve latest status when power lost.

2. If you want to operate valve while the power outage, it can use backup power connect to backup power connector (5V DC input), then it can temporarily operate the valve by press "ON-OFF Reset" button.

2.5 Wireless sensor control



1. When pair wireless sensor or pair remote control, device ring one short beep means under pairing mode, one long beep means paired success. If device ring three beeps, means pair failed. It may this sensor already paired before or remote control is full. Needs to delete this sensor or detect remote control first.
2. It can pair 5pcs wireless sensor for alarm and control function. The wireless sensor needs to

buy separately. Wireless sensor control support turn on valve, turn off valve and start wireless sensor control.

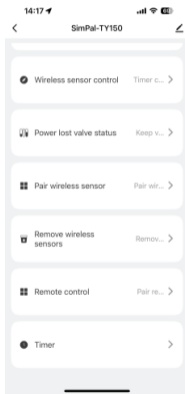
3. It can support 2pcs remote control to set wireless sensor alarm on/off, remote turn on/off valve or start valve wireless sensor control.

4. The device can support following wireless accessories:

- WRC-048-F V2 Remote control
- WLD-061-F V2 Water sensor
- WDS-051-F V2 Door sensor

- WSD-049-F V2 Smoke detector
- WIR-053-F V2 PIR detector
- WSS-055-F V2 Strobe siren

2.6 Schedule control



"Timer" use to set schedule control, it can set time point to turn on/off valve according your settings.

2.7 Reset factory settings

Reset factory settings will make the device removed from all registered APP account, need to set wifi and add device again after reset. Keep press the M button for 10 seconds, device will reset factory settings.

3.0 Technical specification

Product size: 67×58×55 mm (Control unit)

56×31×31 mm (brass valve)

WiFi protocol: 2.4G 802.11 b/g/n

Valve size: Brass DN15 (Optional DN8-N32)

Valve body thread: BSP (Optional NPT)

Working pressure: Max 1.0 MPa

Motor power: <5W

Valve on-off time: 3-4 seconds

Waterproof IP level: IP44

RF frequency: 434Mhz, 20-30 meters range

Power supply: DC 12V 1A