

1 Scope and characteristics of application

Intelligent circuit breaker for AC50Hz , Rated operating voltage 230V , Rated working current 63A and the following user or load, Good-looking , Good and reliable performance,split/merge fast , Modular rail type installation . Mainly used for family , shopping malls, office buildings, hotels, schools, hospitals, villas and so on.

2 Product function

- 2.1 Automatic closing.Products in the normal line, power can be automatically closed, can also be set when the switch is not closed
- 2.2 Wireless Control:Mobile APP Remote Control On/off
- 2.3 Real time feedback:Real-time feedback of product split/close status.
- 2.4 Timing: Timing on/off
- 2.5 Share Control : Can share more people controls
- 2.6 Residual current protection :

When the leakage current is greater than the set value or personal electric shock (with leakage protection) , the protector automatically disconnects within 0.1 s.

- 2.7 With metering function : Can display voltage, current, power, electricity.

3 Normal working conditions

- 3.1 Ambient air temperature
 - a The upper limit shall not exceed 40°C
 - b The lower limit shall not be lower than -5 °C
 - c The average value within 24h does not exceed 35°C
 - d Limit service temperature -25°C ~ 70°C

3.2 Altitude

The elevation of the installation site shall not exceed 2,000 meters.

3.3 Atmospheric condition

- a When the ambient air temperature is + 40 °C, the relative humidity of the air does not exceed 50%.Higher relative humidity can be achieved at lower temperatures.
- b When the monthly mean minimum temperature of the wettest month is 25 °C, the monthly mean phase humidity is 90%.
- c Condensation on the surface of the product due to a change in temperature has been taken into account.

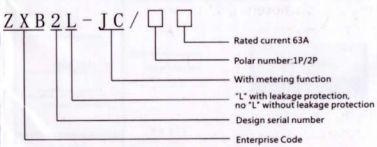
3.4 Pollution level

The pollution level used in the circuit breaker is level 2.

3.5 Type of installation

Class II, Class III installation

4 Type and meaning



Note: 1P without leakage protection, 2P with leakage protection.

5 Technical parameter

- 5.1 Rated operating voltage : AC230V
- 5.2 Rated current In: 1A-63A
- 5.3 Life Span:Electrical Life, on and off 100000 times.
- 5.4 Power consumption of this product : < 3W
- 5.5 Operating voltage range : AC120V-280V
- 5.6 Maximum rated output current : In63A
- 5.7 Wiring: Using clamp wiring terminal,The cross-sectional area of the connecting cable can reach 16mm2
- 5.8 Installation: installed on 35*7.5 mm standard guide rail

6 Installation

- 6.1 The outline dimension drawing and the installation dimension drawing are shown in Fig. 1 and Fig. 2
- 6.2 Wiring Diagram: See Fig. 3
- 6.3 Installation method

The circuit breaker shall be mounted vertically on the mounting rail, which shall be fixed to the plywood or metal plate with M5 screws.And then install the product.

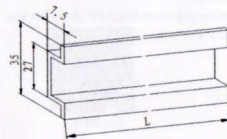


figure 2

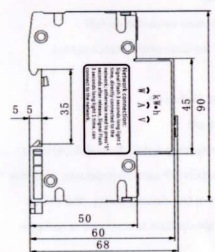
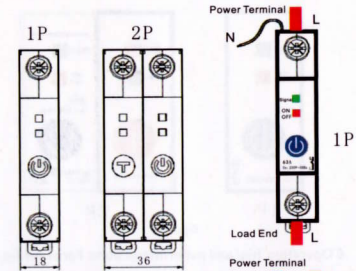
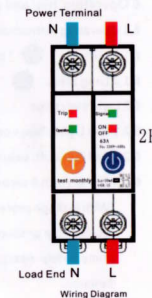


figure 2



Wiring Diagram

Instruction Manual

WIFI wireless control switch with metering

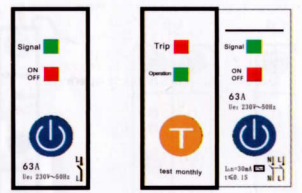


figure 3

6 Operation Trial and panel instructions: Panel see fig.3

- 6.1 Operating instructions
 - 6.1.1 Click the * (power) button to switch on/off
 - 6.1.2 Long Press * (power) * for 5 seconds. Match status.
- 6.2 Light indication
 - 6.2.1 Red Light always on: Switch on.
 - 6.2.2 Red Light off: switch off.
- 6.2.3 Signal Flash 3 seconds long light 1 time:Pairing state
With leakage protection (2P switch) products, click the * (power) button (the product in the closing state) , the switch immediately open, this button test products leakage function.

7 Points to note

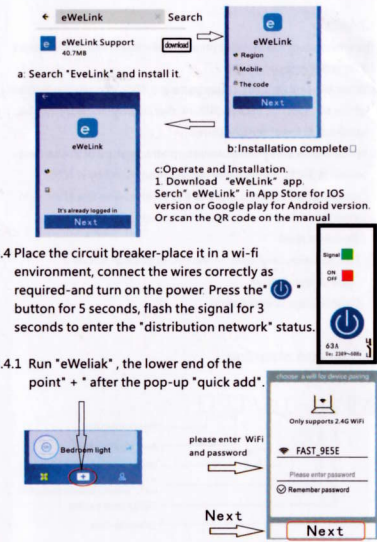
- 7.1 The products be protected from rain water during transportation and storage, and the product shall be stored in a place with air circulation.
- 7.2 Dust and dirt should be removed regularly during use.
- 7.3 The basic technical data on the nameplate or sign should be checked before use.
- 7.4 The parameters of this product are fixed by the manufacturer, and can not be adjusted by disassembling in use.
- 7.5 Zero wire must be connected correctly.
- 7.6 Tighten the connection screw before use to avoid bad contact and damage to the product
- 7.7 The setting temperature of this series of circuit breakers is 30 + 5 °C. if several circuit breakers are installed in the same sealed box, the capacity reduction Coefficient should be 0.8.

8 Install the "eWelink" APP

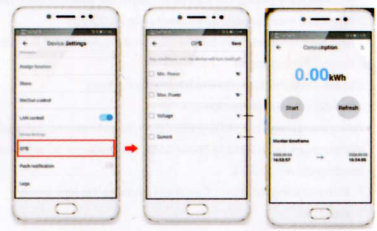
- 8.1 Direct scan figure 4 Installation
- 8.2 Search for "eWelink" APP on Android smartphone and install it.
- 8.3 The iPhone searches the APP store for the "eWelink" APP and installs it.



figure 4



- 8.4 Place the circuit breaker-place it in a wi-fi environment, connect the wires correctly as required-and turn on the power Press the * (power) button for 5 seconds, flash the signal for 3 seconds to enter the "distribution network" status.
- 8.4.1 Run "eWelink" , the lower end of the point* + after the pop-up *quick add*.
- 8.4.2 The device was successfully added and then automatically connected to the network. The connection may take a few minutes. Please be patient. When the indicator light (green light) is always on, the connection is successful.
- 8.4.3 When the indicator is always on and the connection is successful, the switch can be operated on the mobile phone APP.



- 8.4.4 The operation interface can modify the name of the device, Remote Operation On/off, real-time display the status of the device. Set device can be set to share, timing, delay, cycle timing function.

8.5 When the load is switched on, the real-time power, current and voltage can be displayed. Can count the electric quantity, can set the threshold to close automatically.

9.TMALL elve voice control: Connect TMALL elve , through voice control of the product on/off.

10.The signal indicator is not on: Please check.

10.1 Whether the power cord is connected as required (the 1p product external zero wire must be connected to the zero wire of the distribution system).

10.2 Is the power supply voltage normal.

11 Place of use
Mainly used for home, shopping malls, office buildings, hotels, schools, hospitals, villas, irrigation, farms, pumps, rental housing and other electrical equipment remote control.

Note: This product can not be used as the main brake, the front end of the product to be installed short-circuit protection circuit breaker.