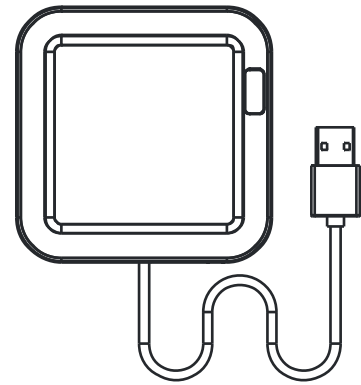


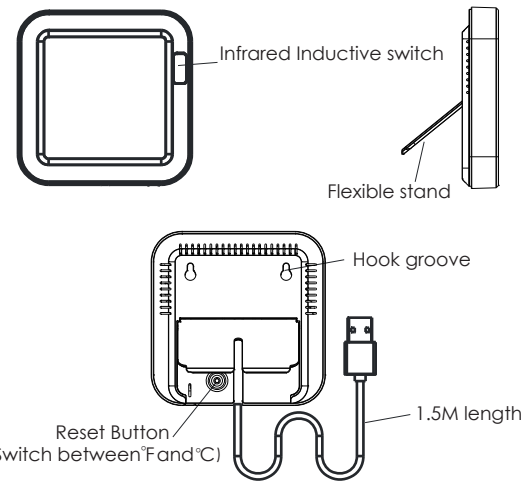
Size : 78*78MM

Temperature & Humidity Sensor with LCD Screen & Backlight



Model: TH16

Product Presentation:



-1-

Product Specification

Size: 80*80*16mm Cable: 1.5M length

Micro Input: DC 5V/1A

LED Indicator: Blue

Wi-Fi Protocol: 2.4GHz

Wi-Fi Standard: IEEE 802.11 b/g/n

Temperature Measure Range: 0C ~ 60C

Temperature Accuracy: ±1 C

Humidity Measure Range: 0% RH~99% RH

Humidity Accuracy: ±5% RH

-2-

Checklist before using the device:

- Your smartphone has connected to a 2.4GHz Wi-Fi.
- You have input the correct Wi-Fi password.
- Your smartphone must be Android 4.4 + or iOS 8.0 +.
- Your Wi-Fi router is MAC-open.
- If the numbers of devices connected to Wi-Fi router reach the limit, you can try to disable a device to vacate the channel or try with another Wi-Fi router.

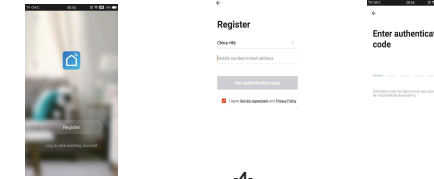
-3-

How to set up:

- Use your smartphone to scan QR code, or search "Smart Life" app in Google Play Store or APP Store to download and install.

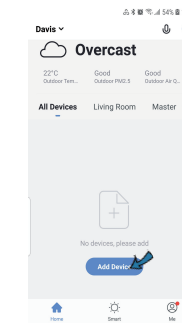


- Create an account with your mobile number and authentication code.



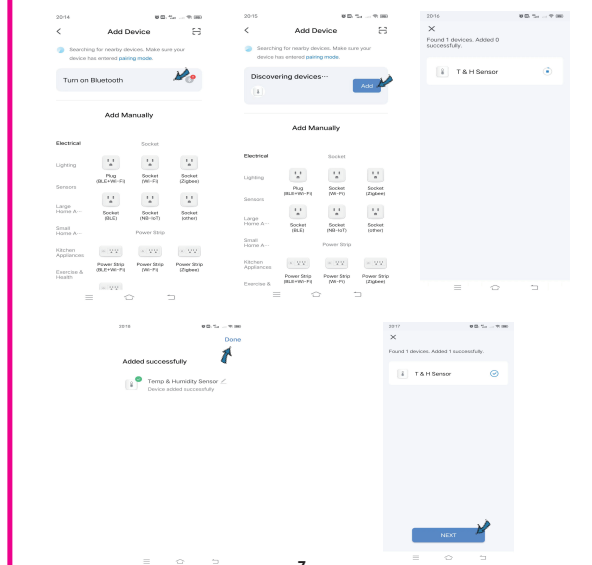
-4-

- Connect your mobile to your Wi-Fi router, connect the USB cable to USB power source, click "+" in the upper right corner of homepage or click "Add Device".



- Bluetooth Mode: The app will advise you to turn on the bluetooth in your mobile, then you choose the device to add, it will connect the network automatically.

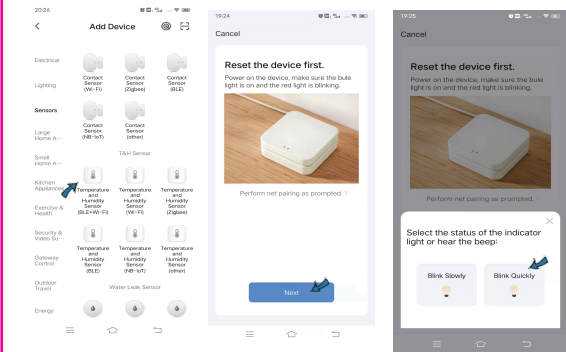
-6-



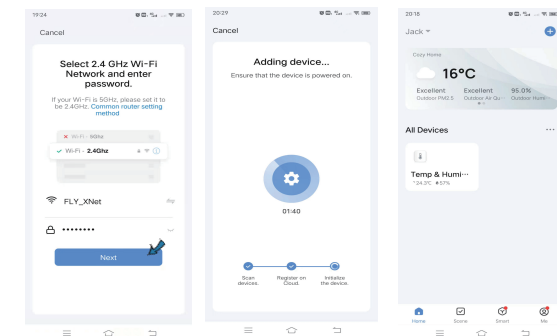
-7-

2) Wi-Fi Mode:

Select "Temperature and Humidity (BLE+Wi-Fi)" from "Sensors" Select "Blink Quickly", make sure the LED light is blinking quickly, if not, hold the reset button about 5s till indicator is blinking quickly.

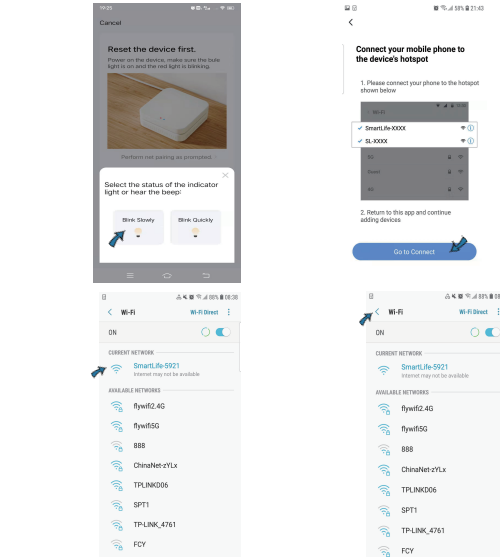


-8-



-9-

You can also select "Blink Slowly", make sure the LED indicator is blinking slowly, if not, hold the reset button for about 5s till the indicator is blinking slowly. Connect your mobile to the device's hotspot: "SmartLife-XXXX", then click to return to App interface, it will connect to Wi-Fi router automatically, configuration completed.

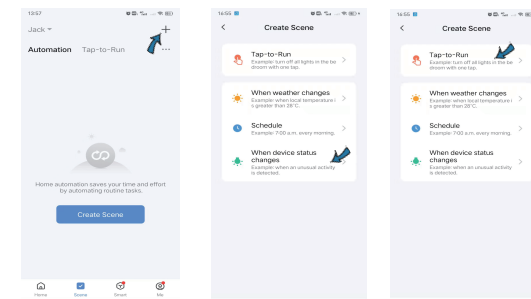


-10-

Functions

1. Intelligent Linkage

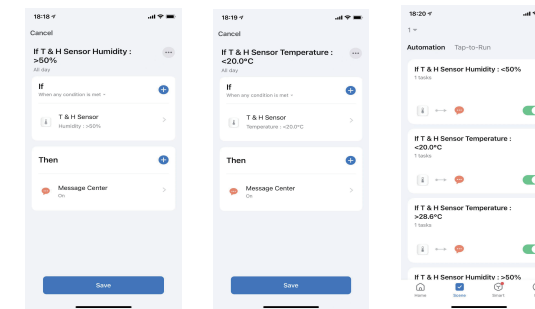
When the ambient environment change, you can execute intelligent linkage. For example, when the room temperature surpass 35C, the air-conditioner will open automatically or when the humidity lower than 20% RH, the humidifier will spray.



-11-

2. Temperature humidity Alert

You can preset the value range for temperature and humidity, when the temperature or humidity goes out of the range, you can receive the alert message via app.



-12-

3. Backlight Display

when the object pass through the infrared inductive switch less than 5CM away, the backlight will be triggered and light up for about 10s. It is convenient for you to browse the screen clearly in darkness.

4. Temp and humidity records

You can view the historic data for temperature and humidity stored for 1 year, and export to your email address.

5. Temperature Unit Switch

You can switch temperature Unit between °F and °C through press of the reset button once. The temperature value will change, and sync on the screen and in the App.

6. Third-party Voice Control

Works with amazon alexa and google assistant.

-13-

FAQ

1. When the temperature and humidity displayed on the screen is more accurate?

About 30 minutes after configuration completed, the temp and humidity displayed on the screen is closer to actual ambient environment, so the readings are more accurate.

2. After temperature unit switch, the temperature value will sync on the screen and in the App?

The temperature value will change accordingly after switch, you can see the change both on the screen and in the App.

3. How the backlight is triggered?

When the object pass through the infrared inductive switch from area less than 5CM away, the backlight will be triggered.

4. Please keep the sensor away from any heat source.

-14-